



C. G. JUNG SOCIETY • SEATTLE

WWW.JUNGSEATTLE.ORG

AUTUMN 2004 NEWSLETTER

We can never prevent war or speak sensibly of peace and disarmament unless we enter this love of war. Unless we move our imaginations into the martial state of soul, we cannot comprehend its pull. This means “going to war,” and this book aims to induct our minds into military service. We are not going to war “in the name of peace” as deceitful rhetoric so often declares, but rather for war’s own sake: to understand the madness of its love.

Our civilian disdain and pacifist horror—all the legitimate and deep-felt aversion to everything to do with the military and the warrior—must be set aside. This because the first principle of psychological method holds that any phenomenon to be understood must be sympathetically imagined. No syndrome can be truly dislodged from its cursed condition unless we first move imagination into its heart.

—James Hillman, *A Terrible Love of War*, 2004

Participate in Community Conversations
on the Current State of the American Psyche

Psyche and the Spirit of Our Times

7:30–9:30 PM Friday September 17 & Friday November 5

Free Admission

Sponsored by Antioch University and the C.G. Jung Society, Seattle
Please check page 7 or www.jungseattle.org for additional information

Gerri Grubbs, Ph.D.

Lecture & Workshop: Bereavement Dreaming and the Individuating Soul

The sudden death of a loved one affects all aspects of our life and certainly changes its meaning and direction. We are generally unaware of how much the inner *Self* prepares us for this crisis and how it guides us later through our nightly dreams. Gerri Grubbs’s newly released book, *Bereavement Dreaming and the Individuating Soul*, presents this death-and-grief process expressed in our dreams. We will focus on the common elements in bereavement dreams as revealed in Gerri’s dreams following the death of her son in 1984 and other true stories presented in her book. She will address the universally experienced archetypal images of death, visitations of the spirit soul, transcendent states of consciousness, and the state of liminality that opens our psyches to the spiritual, archetypal, and collective realms of the unconscious. The seminar will conclude



Sept 10

Good Shepherd
Center, Room 202

Friday Lecture

7:30 PM – 9:30 PM

Fees:

\$10 members

\$15 non-members

www.jungseattle.org

Sept 11

Good Shepherd
Center, Room 221

Saturday Workshop

10:00 AM – 2:30 PM

Fees:

\$30 members
\$40 non-members
\$25 student/senior
members
\$35 student/senior
non-members

Sept 25

Whidbey Island

Saturday Workshop

10:00 AM – 4:00 PM

Oct 15 & 16

Trinity Church
Eighth & James St.

Friday Lecture

7:30 PM – 9:30 PM

Fees:

\$10 members
\$15 non-members

Saturday Workshop

10:00 AM – 2:30 PM

Fees:

\$30 members
\$40 non-members
\$25 student/senior
members
\$35 student/senior
non-members

www.jungseattle.org

with a slide presentation of *Dia de Muertos* in Mexico in which we will see how families in a culture other than our own relate to the world of the dead and how they come together in celebration of their departed loved ones.

Images, themes, and phases of bereavement dreaming that direct our psyche toward wholeness, transcendence, and transformation will be the major focus of Saturday's workshop. Those who wish will have an opportunity to share their experiences involving bereavement dreaming, explore what these dreams may be expressing, and learn how to resolve the grief and suffering that is so much a part of bereavement.

Geri Grubbs, Ph.D., is a practicing Jungian Analyst in Woodinville, Washington and a training analyst on the board of the North Pacific Institute for Analytical Psychology. She has been practicing depth psychology since 1987 and is a graduate of the C. G. Jung Institute in Zurich. Her focus in analytical treatment is on trauma, bereavement, relational, and spiritual issues with adults and children. She has lectured and taught widely on dream interpretation and sandtray therapy, and has recently published her book *Bereavement Dreaming and the Individuating Soul*.

In the Hands of Alchemy The Way of Trust and Transformation

Jerry Wennstrom & Marilyn Strong

Please see page 6 for workshop description and directions

To learn more about Jerry & Marilyn's work, visit www.handsofalchemy.com

Amy Mindell, Ph.D.

Arny Mindell, Ph.D.

*Lecture: Connections between
Psychology & Physics with Special
Focus on Body Symptoms*

Quantum Physics is based upon immeasurable mathematical patterns such as the quantum wave function. There are various ways of understanding this math; one explanation is that the math is just a pattern, which works in reality. Another explanation is that the math describes tendencies towards reality. A third explanation is that the math describes coexisting worlds. Psychology adds another possibility: the math of physics is an unconscious projection of what we experience all the time; the tendency to marginalize our deepest dimensions. This *marginalization* lies imbedded in the math of physics, and is behind what we normally call *reality*. The same process of *marginalization* may also an aspect of how body symptoms arise. Pondering basic connecting principles between psychology and the sciences leads to practical ways of working with body problems. *Process oriented* symptom work combines the thinking of psychology and physics through direct somatic experience available to everyone.



Workshop: The Quantum & Dreaming Body—Finding Relief and Meaning in Body Symptoms

In this workshop on body symptoms, Amy and Arny Mindell shall demonstrate and give participants a chance to work deeply upon a chronic body symptom. By learning how to describe the sensory grounded nature of such symptoms, they introduce process oriented ways to address the medical reality of symptoms, and the dreams and *essence* or *quantum* background to the symptom. This is an experiential workshop; participants should be prepared for inner experience and gentle movement work.

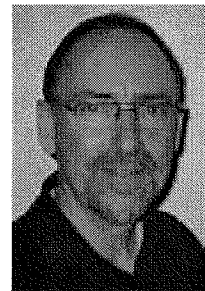
Amy Mindell, Ph.D., is in private therapeutic practice in Portland, Oregon and teaches in over thirty countries. She helped developed process oriented psychology in the areas of ethics, coma, and dance and music. She holds a M.A. and Ph.D. in psychology and is a diplomate of the Process Oriented Psychology Center of Zurich. She wrote *Metaskills*, *The Spiritual Art of Therapy*, *Riding the Horse Backwards* with Arny, *Coma, a Healing Journey*, and *An Alternative to Therapy* as well as many papers in professional journals. Her studies of the feeling skills in therapy, or *metaskills*, are at the core of much of her work. She is presently doing research on creativity and making puppets.

Arny Mindell, Ph.D., is also in private practice in Portland, Oregon, and teaches with Amy in many places. He is known for his development of the *dreambody* and *process work* (process oriented psychology). He is the author of 19 books in 20 languages, including *Dreambody*, *The Shaman's Body*, *Quantum Mind*, and *The Deep Democracy of Open Forums*. Arny has an M.S. from M.I.T., was a Jungian training Analyst, and has a Ph.D. in psychology. He is also known in the area of conflict resolution for his *Sitting in the Fire* and for his integration of psychology and physics, work on dreams, bodywork, relationship, and for interventions in near death situations.

Tom Kelly, M.S.W.

Film Viewing & Workshop: Sabina Spielrein— Enigmatic Muse or Delusional Victim?

Sabina Spielrein was a pioneering figure in the psychoanalytic movement at the beginning of the last century about whom, until recently, relatively little was known. As a result of the discovery of a suitcase containing letters exchanged between Sabina Spielrein and C.G. Jung, much information about this woman and her contribution to the field has come to light.



On Friday evening, we will have the unique opportunity to view two recent films on the life of Sabina Spielrein: *My Name was Sabina Spielrein*, by the Swedish director, Elisabeth Marton, and *Soul Keeper* by the Italian director, Robert Faenza. Each film presents a different perspective on the life of this extraordinary woman, her contribution to the psychoanalytic movement from the beginning, and her influence on two of its major figures and founding fathers, Freud and Jung.

FYI: Oct 30

JPA (Jungian Psychotherapist's Association) offers an all day event for professionals.

Sylvia Brinton Perera,
Jungian Analyst

*Sacrifice to the Fire,
Surrender to the
Light: Dealing with
Traumatic Stress*

Event details are
available at the JPA
website accessible
through
www.jungseattle.org

For more information
on Amy and Arny
Mindell, please visit
www.aamindell.net

CEUs available

Nov 12 & 13

Co-sponsored by
Luminous Psyche
(part of COR
Northwest Family
Development Center)

Membership discount
for this event only
applies to both COR
and Jung Society
Members

CEUs available

www.jungseattle.org

Nov 12 & 13

Membership discount for this event only applies to both COR and Jung Society Members.

Friday Viewing

Henry Art Gallery
Auditorium
UW Campus

7:00 PM – 10:00 PM
check in at 6:30 PM

Fees:

\$15 members
\$20 non-members

Saturday Workshop

Center for Urban
Horticulture, UW
3501 NE 41st St
10:00 AM – 4:00 PM

Fees:

\$40 members
\$50 non-members
\$35 student/senior
members
\$45 student/senior
non-members

Nov 19

Good Shepherd
Center, Room 202

Friday Lecture

7:30 PM – 9:30 PM

Fees:

\$10 members
\$15 non-members

For a reading list provided by Joe Wagenseller please see the *Inside Pages*.

www.jungseattle.org

On Saturday, we will delve further into and explore the impact of this woman on the development and evolution of the analytic movement and, more specifically, on Jung's ideas concerning transference and counter-transference. We will reflect together on the extent to which Sabina Spielrein's life and ultimate fate is symbolic of the treatment of the feminine in the world of analytical psychology and psychoanalysis. In addition, we will explore the legacy in terms of ethics that the field of psychoanalysis has been left with as a result.

We all know that the conditions at the start of an individual's life will have a huge impact on that person's physical and psychic development throughout life. As in the life of an individual, the beginning of any movement too has a crucial influence on its ultimate evolution and direction. What are some of the lasting effects that can still be felt amongst Jungian Analysts today as a result of the relationship between Jung and Sabina Spielrein? What shadow aspects of current analytical psychology might be traced to this part of its past? What can be learned from this part of our history in order to move forward in a more sensitive, more empathic and more conscious manner in our daily work? These are some of the issues we will examine together and have an opportunity to discuss at length in the workshop on Saturday.

Tom Kelly, M.S.W., completed his training as a Jungian Analyst at the C.G. Jung Institute in Zurich in 1986. He is past president of the Inter-Regional Society of Jungian Analysts, serves on the editorial board of the New York Institute Journal of Jungian Theory and Practice and is currently Honorary Secretary of the International Association for Analytical Psychology. Tom Kelly lives and has a practice in Montreal, Canada.

Joe Wagenseller, D.Min., N.C.Psy.A.

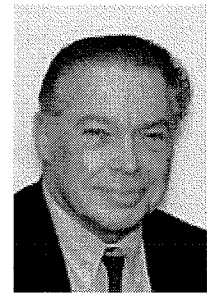
Lecture: Individuation—Jung's Psychological Equivalent of a Spiritual Journey

For Carl Jung, *Individuation* is a lifelong process through which we seek to discern our individual destinies as the *Self* challenges us to become who we were meant to be. In this lecture, we will explore what Jung meant when he referred to his concept of *Individuation* as a psychological equivalent to a spiritual journey.

We will consider the archetypal dimension of the psyche as manifested in some of the major themes of the great world religions and how they occur in the psychological experiences of modern-day men and women.

Special attention will be given to the second half of life, during which unresolved issues from the past press upon us with intensity, challenging us with opportunities for renewal. The mid-life experience—whether crisis, upheaval, or gradual intensification to get on with our lives—offers an opportunity for a creative response to what may be unpleasant or troubling symptoms. These symptoms, understood symbolically, take on the significance of the Call, and aspect of the Archetype of Vocation, bringing a new sense of meaning, purpose, and identity.

Included in our reflections will be a consideration of the *ego-Self* axis, the



teleological function of the *Self* and the prospective/synthetic approach to symptomatology, including Jung's unique "redemptive attitude" toward the *shadow*.

Joe Wagenseller, D.Min., N.C.Psy.A., is a Jungian Analyst, graduate of the C. G. Jung Institute of New York, practicing in New York City and Westport, Connecticut. Current president of the C. G. Jung Institute of New York and the Temenos Institute, Inc. of Westport, he is the author of "The Archetype of Vocation" in *Protestantism and Jungian Analysis* and "Spiritual Renewal at Midlife from a Jungian Perspective" in the *Journal of Religion and Health* (Vol. 37. No. 3). He is a member of the Board of Trustees of the American Board for Accreditation in Psychoanalysis and is an Associate Professor at the Graduate Department of Clinical Psychology Teachers College, Columbia University, NYC. He lives with his wife Virginia and their family in Westport, Connecticut.

Naomi Lowinsky, Ph.D.

*Lecture: After Termination—Cultivating the
"Other" Within*

the stone is an orphan
—C.G. Jung

What happens to the psyche of one who has been held, for most of her adult life, in the container of a Jungian analysis, after termination? The magnet has been strong, the center has held, then it is gone. As Jung says: "In the dark of the enigma the psyche gazes at herself."

What happens now? Does she fly into many fragments? Do the old hob goblins return? Or is she revealed to herself in her clearly faceted, crystalline, essential nature?

There are as many versions of this story as there are those who come to the end of a long analysis. This version will be told as it has been informed by alchemy and the making of poems.

Workshop: Writing as Spiritual Practice

esse in anima (be in the soul)
—C.G. Jung

If, with Jung, you understand the *Self*, the sacred, as the unconscious, then writing out of a connection to the unconscious is a spiritual practice.

In this workshop we will learn how to cultivate our own sacred language. We will listen to poems that express the divine. We will use writing exercises to open ourselves to our deepest words.

For those who write and those who want to write.

Naomi Lowinsky Ph.D., is a widely published poet, an Analyst member of the San Francisco Institute, poetry and fiction editor for *Psychological Perspectives* and an editor for the San Francisco *Jung Institute Library Journal*. Her book of poems, *red clay is talking* was published in 2000. A second book, *crimes of the dreamer* containing poems about analysis, is forthcoming.



The life of Christ, understood psychologically, represents the vicissitudes of the Self as it undergoes incarnation in an individual ego.
—Edward Edinger
The Christian Archetype

Dec 10 & 11

Good Shepherd
Center, Room 202

Friday Lecture

7:30 PM – 9:30 PM

Fees:

\$10 members
\$15 non-members

Saturday Workshop

10:00 AM – 2:30 PM

Fees:

\$30 members
\$40 non-members
\$25 student/senior
members
\$35 student/senior
non-members

www.jungseattle.org

If you are not already familiar with Jerry and Marilyn's work and art, please visit their web site.

Sept 25

Whidbey Island

Saturday Workshop

10:00 AM – 4:00 PM

Fees:

\$46 members

\$56 non-members
(includes lunch)

Statement of Purpose

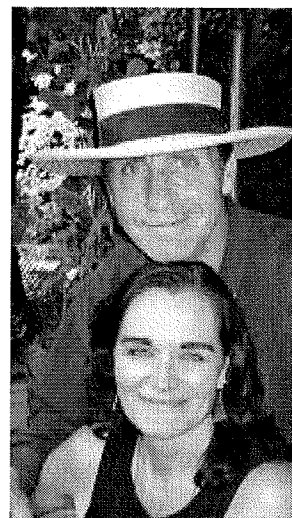
The C.G. Jung Society, Seattle, a nonprofit educational corporation founded in 1973, publishes this newsletter three times a year. The purpose of the Society is to promote public interest in, and understanding of, analytical psychology and the current use of Jungian concepts by contemporary thinkers. The Society sponsors lectures, workshops, seminars and study groups, and maintains a library of Jungian materials. Programs are, for the most part, intended for the general public.

www.jungseattle.org

**In The Hands of Alchemy
The Way of Trust and Transformation**

Jerry Wennstrom & Marilyn Strong

www.handsofalchemy.com



This event will take place in the workshop space of the facilitators at their home on Whidbey Island, surrounded by artist Jerry Wennstrom's murals and life-size interactive cedar sculptures. We will begin by helping participants shift from the routines and pressures of their daily lives into a more introspective, listening mode through drumming and chanting led by Marilyn Strong. We will then show the 30-minute Parabola Magazine documentary, *In the Hands of Alchemy*, which provides an overview of Jerry and Marilyn's art and lives, followed by discussion.

After engaging Jerry and Marilyn's personal stories of transformation, the workshop is designed to help participants work with the transpersonal and universal aspects of surrender and metaphorical death inherent in the archetypal journey that Jung called *Individuation*. Many know this in myth as "the descent", as the mystic's "dark night of the soul", as alchemy's *nigredo* phase, the "black blacker than black". We will work with the fears and limitations that hold each of us back from our own personal surrenders, releasing those fears through sacred ceremony. We will explore together how joyful expression is our birthright and introduce a way to open creatively to the mystery and the unknown in our lives.

In 1979, **Jerry Wennstrom** was a rising star in the New York art world when he decided that, in order to truly live, he must take the ultimate leap of faith. He destroyed his large body of art, gave away all his possessions and spent the next ten years wandering, seeking, and trusting. He is author of *The Inspired Heart: An Artist's Journey of Transformation*.

Marilyn C. Strong holds a BA in Religion and Adult Education and an MA in Spirituality and Culture. She is a skilled group facilitator, counselor, drummer, singer, and has studied ritual and ceremony, depth psychology, Jungian dream analysis, and alchemy.

Directions: Take Interstate 5 (I-5) North to Mukilteo/Clinton Ferry to Whidbey Island exit. Then just follow the signs to the Ferry. Once you are on Whidbey and driving off of the ferry, stay on that highway (525) for about one mile to the top of the long hill. The first road that crosses the highway at the top of the hill is Campbell Road. Go left on Campbell and stay on it for less than 1/4 mi and you will cross over Cultus Bay Rd. Continuing on Campbell rd, our driveway is 1/4-ish mile beyond Cultus Bay rd. on the left. You will see the driveway for The Waldorf School/Chinook/Whidbey Institute on the left and Fox Hill Lane is the next drive past Chinook's driveway, also on the left. That is the beginning of our driveway. There is a picture of a fox up in the tree at the beginning of the driveway. Drive back Fox Hill a little ways and you'll come to a fork in the road. Take the middle driveway with a sign in the tree "STRONG" 6365 S. Fox Hill Lane, that is our driveway.



INSIDE PAGES

Autumn 2004

Member-to-Member Supplement

In this issue...

NPIAP	1
Directions	2,3
<i>Good Shepherd Center</i>	
<i>Antioch University</i>	
<i>Henry Art Gallery (UW)</i>	
<i>Trinity Church</i>	
<i>Center for Urban Horticulture (UW)</i>	
Nov Reading list	3
Dr. Bosnak Flyer	4
Event Calendar	5
Adopt-an-Event	7
Book Study Group	1
Membership Form	8
Submit articles for Winter Newsletter by 11/11/04	

Book Study Group meets on the last Sunday of each month at the Trinity Parish Episcopal Church from 6 p.m. to 8 p.m. The group is finishing *Answer to Job* and deciding on what the next book will be.

C. G. JUNG PROFESSIONAL SEMINAR PROGRAM NORTH PACIFIC INSTITUTE FOR ANALYTICAL PSYCHOLOGY

The C. G. Jung Professional Seminar Program, a two-year, four semester program for mental health professionals offered by NPIAP, will begin its second year of seminars in September, 2004. This very successful monthly seminar series for psychologists, psychoanalysts, psychotherapists, social workers, and pastoral counselors has had full participation since its inception in 1998. Professionals who wish to gain an in-depth understanding of the concepts and contributions of analytical psychology are especially drawn to the seminar series and its focus on the Collected Works of C. G. Jung.

The monthly seminars are held one Saturday of each month, 11:00am to 3:30pm, from September to June. All seminars are taught by Jungian analysts on the NPIAP Board. Basic analytic concepts will be covered during this second, more advanced year, that includes individuation, active imagination, psychological typology, transference/countertransference, alchemy, nature of the shadow and evil, analysis of dreams, and anima/animus in the transference relationship.

The seminars include didactic discussions of assigned readings given a month prior to each seminar along with related case presentations by the analysts and the participants. Small-group work and experiential exercises are also a part of many seminars.

Registrations are being accepted for this second year as long as space is available. Some previous studies of analytical psychology as well as a period of Jungian analysis or Jungian-oriented psychotherapy are required for those wishing to participate. All students must be practicing clinicians.

Cost of the two-year program is \$450 per semester in addition to a \$100 non-refundable registration fee. Those wishing to register should do so as soon as possible as there are only a few spaces available. Registration forms can be downloaded directly from www.NPIAP.org under Professional Seminar Program. If you would like further information, telephone coordinator, Geri Grubbs, at 425-844-8194, or send an email to her at gerigrubbs@earthlink.net.

Each monthly seminar has been approved for 4 CEU's by the NASW Washington State Chapter. Licensed Social Workers, Marriage and Family Therapists and Mental Health Counselors are eligible. Provider number 1975-172

Good Shepherd Center

4649 Sunnyside North

From Interstate 5, take the 45th Street exit. Travel west toward Wallingford. Turn right from 45th Street onto Sunnyside Avenue North. The Center is on the left side of the street at 4649, just before Sunnyside intersects with 50th Street.

Parking available in lots south and north of the building, simply follow main entry drive way. Street parking also available.

Antioch University

2326 Sixth Avenue

From I-5, take the Stewart Street exit off Interstate 5 to Sixth Avenue. Turn right on Sixth Avenue (one-way street) and continue about four blocks. Antioch is on your right between Battery and Bell streets.

From Aurora/Highway 99, take the Denny Way exit (next after the Broad Street exit). Cross Denny Way. This will put you on Wall Street. Get in the left lane. Turn left on Fifth Avenue. Go one block to Battery Street and turn left on Battery Street. Go one block. Antioch is on your right, on Sixth Avenue between Battery and Bell streets.

www.seattleantioch.edu/contact/directions.html

Trinity Parish Episcopal Church

609 Eighth Avenue

From I-5 South, take the James Street Exit. Turn left on Cherry and go two blocks east (under the freeway and up the hill). At Eighth, turn right to park in front of the Church.

From I-5 North, Take the James Street exit and turn right on James Street. Go one block east (up the hill) and turn left at the first light (Eighth). The church is just north of this intersection. Park on Eighth across from the church.

You may also park in a designated Trinity Church spot in the parking lot just north of Cherry Street.

Buses 3 & 4 stop within a block of Trinity Church.

www.ecww.org/churches/seattle/trinity/directions.html

Henry Art Gallery, UW

15th Ave NE & NE 41st St

From I-5 southbound, take the NE 45th Street exit (#169). Turn left onto NE 45th Street. Continue east about one quarter mile to 15th Avenue NE and turn right. Head south on 15th Avenue three blocks to NE 41st Street. Turn left at Gate #1 into the Central Plaza Garage to pay for parking. Limited evening street parking may be available at no charge. Easy bus access.

www.washington.edu/admin/parking/directions/centraln.html

From I-5, take the N.E. 45th Street exit. Drive east through the University District, past the UW campus, down the hill (viaduct). At the stoplight at the bottom of the viaduct, turn left to stay on N.E. 45th Street. At the next stoplight (5-way intersection), turn right (south) onto Mary Gates Memorial Drive. Continue south to the bend in the road (where Mary Gates Drive becomes N.E. 41st St.). The entrance to the Center is on your right.

From 520, take the Montlake Boulevard exit, and drive north on Montlake Boulevard. Continue across the bridge and past Husky Stadium, staying right as Montlake curves east into N.E. 45th. At the intersection of N.E. 45th and Mary Gates Memorial Drive (5-way stop light), turn right (south) onto Mary Gates Memorial Drive. Continue south to the bend in the road (where Mary Gates Drive becomes N.E. 41st Street). The entrance to the Center is on your right.

The following bus routes stop at NE 45th and Mary Gates Memorial Drive: #25, 65, & 75.

depts.washington.edu/urbhort/html/info/contact.html

What I present will be understandable on its own, but if people have time and would like to do some background reading, these might be of interest. —Joe Waggenseller

Edward Edinger. *Ego and Archetype*...especially the section on the Ego-Self Axis and the Chapter on Christ as Paradigm of the Individuating Ego.

C.G. Jung Collected Works

Vol. 9i *Archetypes and the Collective Unconscious*

Chapters on Archetypes and the Collective

Unconscious 1934/35

Concept of the Collective Unconscious 1936

Concerning Rebirth 1940–1950

Vol. 9ii *Aion*

Christ as Symbol of the Self

Structure and Dynamics of the Self

Vol 11 *Psychology and Religion East and West*

Psychology and Religion (The Terry Lectures) 1938–40

A Psychological approach to the Dogma of the Trinity
1942–48

Transformation Symbolism in the Mass 1942/1954

Center for Urban Horticulture, UW

3501 NE 41st St

Only the living presence of the eternal images can lend the human psyche a dignity which makes it morally possible for a man to stand by his own soul, and be convinced that it is worth his while to persevere with it.

—C.G. Jung, *Mysterium Coniunctionis*

Suggested Reading for

November 19 Lecture

In psychological terms, the incarnation of God means individuation. To the extent that one becomes aware of the transpersonal center of the psyche, the Self, and lives out of that awareness, one can be said to incarnating the God-image. —Edward Edinger, *The Creation of Consciousness*

THE C.G. JUNG SOCIETY, SEATTLE

presents

AUTUMN 2004

Geri Grubbs, Ph.D.

September 10 & 11

Lecture & Workshop: Bereavement Dreaming
and the Individuating Soul

Terry Gibson, Ph.D.

September 17 (co-sponsored with Antioch Univ.)

Community Conversation: Psyche and the Spirit
of the Times

Jerry Wennstrom & Marilyn Strong

September 25 www.handsOfalchemy.com

Workshop: In the Hands of Alchemy—The Way
of Trust and Transformation

Amy Mindell, Ph.D.

Arny Mindell, Ph.D.

October 15 & 16 www.aamindell.net

Lecture: Connections between Psychology &
Physics and Body Symptoms

Workshop: The Quantum & Dreaming Body—
Meaning in Body Symptoms

To Be Announced

November 5 (co-sponsored with Antioch Univ.)

Community Conversation: Psyche and the Spirit
of the Times

Tom Kelly, M.S.W.

November 12 & 13 (co-sponsored with
Luminous Psyche)

Film Viewing & Workshop: Sabina Spielrein—
Enigmatic Muse or Delusional Victim?

Joe Waggenseller, D.Min.

November 19

Lecture: Individuation—Jung's Psychological
Equivalent of a Spiritual Journey

Naomi Lowinsky, Ph.D.

December 10 & 11

Lecture: After Termination—Cultivating the
"Other" Within

Workshop: Writing as Spiritual Practice

WINTER & SPRING 2005

Robert Bosnak, Ph.D.

January 14, 15 & 16 www.cyberdreamwork.com

Lecture: Dreams as Ecosystems—Incubation for
Health and Imaginative Solutions
Workshop: Embodied Imagination—Learning the
Ropes

Special Event for Software/Web Designers:
Dissolving Problems in Software Design
participation limited to 12

James Hollis, Ph.D.

February 11 & 12 www.junghouston.org

Lee Roloff, Ph.D.

February 19 & 26, March 5 & 12

Class: Fairy Tales

Includes play *The Secret in the Wings* at Seattle Rep
on February 26, 7:30 p.m.
participation limited to 25

Luigi Zoja, Ph.D.

March 18 & 19 (co-sponsored with NPIAP and
Portland's Friends of Jung)

Dennis Slattery, Ph.D.

April 8 & 9

Lecture & Workshop: Myths of the Underworld

Joan Chodorow, Ph.D.

May 13 & 14

Lecture & Workshop: Affect and Active
Imagination

To make inquiries, contact:

C.G. Jung Society, Seattle

4649 Sunnyside Avenue North, Room 222

Seattle, WA 98103

Telephone (206) 547-3956

Fax (206) 547-7746

jungocietyseattle@yahoo.com

Program details also available at:

www.jungseattle.org



SPECIAL EVENT WITH ROBERT BOSNAK, Ph.D.

January 14, 2005 Friday Lecture 7:00 p.m.–9:00 p.m.

Dreams as Ecosystems: Incubation for Health and Imaginative Solutions

January 15, 2005 Saturday Workshop 9:00 a.m.–4:45 p.m.

Embodied Imagination Learning the Ropes

Check in ½ hour prior to event on January 14 & 15

Center for Urban Horticulture
3510 NE 41st St

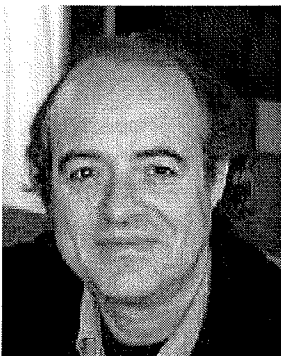
—
January 16, 2005 Sunday Workshop for Software/Web Designers
Starts at 9:30 a.m. with breaks, after dinner wrap up at 7:00

Dissolving Problems in Software Design

Limited to 12 participants

Incubation techniques learned on Friday and Saturday
would be useful to participants attending Sunday event

University Inn, Lopez Room
4140 Roosevelt Way NE



Robert Bosnak, Ph.D., is a Dutch Jungian psychoanalyst and diplomate of the C. G. Jung Institute, who trained in Zurich, Switzerland from 1971 to 1977. Since then he has been in private practice in the United States (Cambridge, Massachusetts) and has recently moved to Sydney, Australia. He continues to travel to the U.S. three times a year to teach at Pacifica Graduate Institute and to practice on the East Coast. The Jung Society has scheduled a weekend for Robert Bosnak to lecture and do an intensive workshop on dream incubation techniques.

At his website, www.cyberdreamwork.com you will find more information about Robert Bosnak's cyberdreamwork projects and his publications which include *A Little Course in Dreams*, *Christopher's Dreams: Dreaming and Living with Aids*, and *Tracks in the Wilderness of Dreaming*.

Robert Bosnak, Ph.D., Lecture & Workshop Information

Friday night, January 14 7:00 p.m. - 9:00 p.m. (Check in ½ hour early)

Dreams as Ecosystems: Incubation for Health and Imaginative Solutions

3000 years ago Western medicine started with dream incubation. The word 'clinic' stems from the benches dreamers would lie on in the temple to receive a dream, the klinai. It was implicitly assumed that dreaming was part of an ecosystem, including health, a powerful geographic location, and the responsive presence of creative spirits (gods) surrounding us. The lecture will focus on 21st-century techniques to recapture this ancient method. The word solution, following Jung's work on the art of alchemy, is understood not just as an answer to a problem, but primarily as the dissolution of the problem itself, giving rise to a new orientation. Cases will be presented from work with physically ill people and from work with actors and playwrights. Case presentations are being prepared to show how these techniques might work in contemporary software development.

Saturday, January 15 9:00 a.m. - 4:45 p.m. (Check in ½ hour early)

Embodied Imagination: Learning the Ropes

This workshop will focus on learning a variety of techniques to approach dreaming through a sense of body. The focus is on becoming familiar with incubation techniques and the subsequent work on the resulting dreams, in order to apply this to creative and health problems. Suggestions will be given about how to continue the work in peer dream groups.

Sunday, January 16 Full day Workshop, starts at 9:30 a.m. with breaks, wrap up begins at 7:00 p.m.

Dissolving Problems in Software Design

Registration limited to twelve individuals with experience in software and web design.

Jung stressed that through analysis a new connection could be forged to the guiding spirit, or as we now call it, the sense of direction, or the ability to orient oneself. Techniques will be taught and rehearsed to activate this sense of orientation through incubation, and a dissolution of the problem, with references to alchemical imagination techniques, which show parallels to work in software.

The day will consist of direct practical work on design problems brought in by participants.

Pre-register for Workshops by December 15, 2004

I enclose _____ check or credit card for the following:

January 15 Workshop \$60 Member, \$70 Non-Member, \$50 Student/Senior Member, \$60 Student/Senior Non-Member

Amount: _____ (after 12/15, full price for the workshop. Add \$10 to pre-registration rate.)

January 16 Workshop \$80 Limited to 12 participants with experience in software/web design

Amount: _____

Pre-registration Rate for those attending Friday/Saturday/Sunday \$150 Members & \$160 Non-member

Amount: _____

Accommodations for out-of-town attendees:

___ I'm interested in the special room rate of \$89 + tax available for room reservations made by November 30, 2004
Please reserve Friday ___ and/or Saturday ___ night at the University Inn, 4140 Roosevelt Way NE, Seattle.
Includes Full Breakfast. Shuttle service to Saturday workshop. Accommodations are in Single Rooms, Doubles extra.

CREDIT CARD INFORMATION

I authorize charging my Credit Card Visa/MC _____ Exp.

Date _____

Name _____ Phone _____

Address _____

Send to: C. G. Jung Society, Seattle, 4649 Sunnyside Avenue North, Room 222, Seattle WA 98103
Telephone (206) 547-3956, Fax (206) 547-7746, jungsocietyseattle@yahoo.com
www.jungseattle.org

THE C.G. JUNG SOCIETY, SEATTLE

presents

AUTUMN 2004

Geri Grubbs, Ph.D.

September 10 & 11

Lecture & Workshop: Bereavement Dreaming and the Individuating Soul

Terry Gibson, Ph.D.

September 17 (co-sponsored with Antioch Univ.)

Community Conversation: Psyche and the Spirit of the Times

Jerry Wennstrom & Marilyn Strong

September 25

Workshop: In the Hands of Alchemy—The Way of Trust and Transformation

Amy Mindell, Ph.D.

Arny Mindell, Ph.D.

October 15 & 16

Lecture: Connections between Psychology & Physics and Body Symptoms

Workshop: The Quantum & Dreaming Body—Meaning in Body Symptoms

To Be Announced

November 5 (co-sponsored with Antioch Univ.)

Community Conversation: Psyche and the Spirit of the Times

Tom Kelly, M.S.W.

November 12 & 13 (co-sponsored with Luminous Psyche)

Film Viewing & Workshop: Sabina Spielrein—Enigmatic Muse or Delusional Victim?

Joe Waggenseller, D.Min.

November 19

Lecture: Individuation—Jung's Psychological Equivalent of a Spiritual Equivalent

Naomi Lowinsky, Ph.D.

December 10 & 11

Lecture: After Termination—Cultivating the "Other" Within

Workshop: Writing as Spiritual Practice

WINTER & SPRING 2004

Robert Bosnak, Ph.D.

January 14, 15 & 16

Lecture: Dreams as Ecosystems—Incubation for Health and Imaginative Solutions

Workshop: Embodied Imagination—Learning the Ropes

Special Event for Software/Web Designers: Dissolving Problems in Software Design participation limited to 12

James Hollis, Ph.D.

February 11 & 12

Lee Roloff, Ph.D.

February 19 & 26, March 5 & 12

Class: Fairy Tales

Includes attending play Secret in the Wings at Seattle Rep on February 26, 7:30 p.m. participation limited to 25

Luigi Zoja, Ph.D.

March 18 & 19 (co-sponsored with NPIAP and Portland's Friends of Jung)

Dennis Slattery, Ph.D.

April 8 & 9

Lecture & Workshop: Myths of the Underworld

Joan Chodorow, Ph.D.

May 13 & 14

Lecture & Workshop: Affect and Imagination

To make inquiries, contact:

C.G. Jung Society, Seattle

4649 Sunnyside Avenue North, Room 222
Seattle, WA 98103

Telephone (206) 547-3956

Fax (206) 547-7746

jungocietyseattle@yahoo.com

Program details also available at:

www.jungseattle.org



THE C.G. JUNG SOCIETY, SEATTLE

Be part of the exciting work of bringing relevant and meaningful educational programs to the Jungian community and to those who want to learn more about Jungian psychology.

ADOPT-AN-EVENT

Please indicate which Events or Speakers you would like to support with your energy, resources and talent. The Jung Society will make available tickets to events and other expressions of appreciation for your support

Speakers/Events:

How would you like to help?

- Sending out Press Releases
 - Designing and/or posting fliers
 - Sending invitational letters to groups
 - Hosting a social hour to "meet-the-speaker"
 - Contacting and Scheduling Facilities
 - Overseeing author's Book Sales
 - Cashiering
 - CEU paperwork
 - Setting up and taking down chairs, transporting equipment (depending on the venue)
 - Refreshments
 - Copying Audiotapes of lectures for library
 - Chauffeuring speaker(s)
 - Funding a Workshop Scholarship Fund
 - Pledging one night of hotel accommodation for an out-of-town speaker
 - Other _____
 - Can help co-sponsorship events with other groups, please indicate groups you have in mind
-

CREATE-AN-EVENT

Please indicate if you are interested in supporting any of the suggested speakers/ topics submitted for consideration thus far and indicate what kind of support you can provide. Proposals for new topics, "must-see" speakers, and creative types of programming in 2005-2006 are invited.

2005-06 Ideas:

- Terry Gibson, Nov. 11/12, 2005 (Scheduled)
"From Iona to Aion: Cinematic Images of the Interfaces Between a Jungian Depth Psychology and Ancient Celtic Spirituality"
- "Astronomy/Astrology" Festival with Laurence Hillman, Usha Haywood, and John Kaufman
- Speaker Claire Dunne Author of Carl Jung: Wounded Healer of the Soul
- Speaker John Giannini Author of Compass of the Soul: Typology's Four Archetypal Directions as Guides to a Fuller Life
- Panel addressing the three streams of Jungian practice in America as outlined in Thomas Kirsch's book The Jungians (Routledge, 2000)
- Other _____

How can you be reached?

Name, phone number, email, if available

Send to: C. G. Jung Society, Seattle, 4649 Sunnyside Avenue North, Room 222, Seattle WA 98103
Telephone (206) 547-3956, Fax (206) 547-7746
Program Planner, Connie Eichenlaub connieei@earthlink.net



MEMBERSHIP FORM

NOTICE: *The Jung Society Membership Directory is intended to help members develop small group opportunities for exchanging Jungian thought. The Board expressly prohibits all other uses, particularly solicitation in any form.*

Please fill out your name and contact information, and check the boxes to the left to indicate you'd like to INCLUDE your contact information in the Membership Directory. You may also request that your entry be excluded from the Membership Directory.

- Name _____ Date _____
- Street Address _____
- City, State, Zip _____
- Email _____
- Phone(s) _____
- EXCLUDE my entry completely from the Membership directory

Interests (for inclusion in the Membership Directory):

- | | | |
|--|--|--|
| <input type="checkbox"/> My interests are general | <input type="checkbox"/> Dreams | <input type="checkbox"/> Typology |
| <input type="checkbox"/> Individuation and development | <input type="checkbox"/> Creativity | <input type="checkbox"/> Religion |
| <input type="checkbox"/> The archetypes & symbolism | <input type="checkbox"/> Alchemy | <input type="checkbox"/> Synchronicity |
| <input type="checkbox"/> Mythology and fairytales | <input type="checkbox"/> Anthropology | <input type="checkbox"/> Relationship |
| <input type="checkbox"/> Illness, wellness & healing | <input type="checkbox"/> Women's issues | <input type="checkbox"/> Men's issues |
| <input type="checkbox"/> Midlife and aging issues | <input type="checkbox"/> Community & social issues | |
| <input type="checkbox"/> Other topics _____ | | |

I've attended/am attending classes at Zurich Institute at Pacifica

Any areas you would be willing to help with:

- | | | |
|---|--|--|
| <input type="checkbox"/> Newsletter editing/publication | <input type="checkbox"/> Publicity | <input type="checkbox"/> Library staff |
| <input type="checkbox"/> Program planning | <input type="checkbox"/> Fundraising | <input type="checkbox"/> Office tasks |
| <input type="checkbox"/> Event hospitality | <input type="checkbox"/> Event cashier | <input type="checkbox"/> Membership |

If it is time to renew your membership, or you are a new member joining the Society, please enclose dues at the level indicated.

- | | | |
|--|--|--|
| <input type="checkbox"/> \$500 Sustaining Couple | <input type="checkbox"/> \$300 Sustaining Member | <input type="checkbox"/> \$75 Couple |
| <input type="checkbox"/> \$165 Contributing Couple | <input type="checkbox"/> \$100 Contributing Member | <input type="checkbox"/> \$45 Individual |
| <input type="checkbox"/> \$10 Newsletter Only | | <input type="checkbox"/> \$30 Student/Senior |

Return this form to:

C. G. Jung Society, Seattle, 4649 Sunnyside Avenue North, Room 222, Seattle WA 98103.

Telephone (206) 547-3956, Fax (206) 547-7746. jungsocietyseattle@yahoo.com

www.jungseattle.org

A Series of Community Conversations

Psyche and the Spirit of Our Times

Come join your fellow citizens in a community discussion about the current state of the American Psyche. Each session will begin with a presentation by a well-known speaker who is familiar with the language of depth psychology and the insights of C.G. Jung as applied to the collective psyche. We will then break up into small groups so that each person can listen and be heard as they struggle to make sense of the events currently taking place in the American landscape. We will then reconvene for a full group discussion. Please join us, and bring a friend!

At the September 17 event, Terrill Gibson, Ph.D., will present opening remarks, entitled *The Faiths, the Fool, and the Future: Rediscovering the Sacred Pilgrimage to Psyche's Peace*, and facilitate group discussion.

Terrill L. Gibson, Ph.D., is an ordained United Methodist elder, diplomate pastoral psychotherapist, an approved supervisor for the American Association for Marriage and Family Therapy, and a diploma Jungian Analyst who practices individual and family therapy with Pastoral Therapy Associates in Tacoma. He lectures and writes widely on the basic theme of the integration of psychotherapy and spirituality. He has been a frequent consultant, faculty, supervisor, and facilitator for a variety of Pacific Northwest universities, social service agencies, corporations, and religious congregations. He has a passion for film, sea kayaks, and the blues.



November 5 Event Facilitator (TBA).

Pre-register for Winter 2005 Events

Lee Roloff, Ph.D. *Class: Fairy Tales*

On four Saturday mornings, 10 a.m. to noon, Dr. Roloff will be presenting a class on Fairy Tales. This class will be similar to the previous series he presented, which was very well received. The fairy tales selected for this series do not include those covered in the previous series. **Class includes attendance at the Seattle Rep's production of *The Secret in the Wings*, directed by Mary Zimmerman, at 7:30 p.m. on Saturday February 26, 2005.**

Robert Bosnak, Ph.D. *Lecture & Workshop: Dream Incubation & Special Event for Software/Web Design Professionals*

A flyer is included in this newsletter for this event in January 2005. For additional information on Dr. Bosnak, please visit www.cyberdreamwork.com.

**Sept 17 &
Nov 5**

Antioch University
2326 Sixth Ave
Sixth and Bell St
Room 100

Fridays

7:30 PM – 9:30 PM

Fees:

Free admission

More information about upcoming and previous community discussions are available at www.jungseattle.org

Co-sponsored by
Antioch University

**Feb 19, 26
Mar 5, 12**

Good Shepherd Center,
Room 202

Saturdays

10:00 AM – noon

Play: *The Secret in the Wings*
Feb 26, 7:30 p.m.

Limit 25 participants

Fees:

\$65 + \$22 theatre ticket for registrations before Feb 1.
After Feb 1, \$75 + \$22 theatre ticket.

www.jungseattle.org

Board of Directors

Paul Collins
President

John Krausser
Treasurer

Diane Bogue
Office Manager &
Cashier

Bunny Brown
Librarian &
Membership

Connie Eichenlaub
Program Planner

Barbara Heather
Secretary &
Newsletter

Lynn Davis Fox
Community
Outreach

Vacant
Publicity

Vacant
Events Coordinator

CEUs Update

Due to lack of volunteer time to administer the NASW CEU process, the Jung Society is limiting CEUs offered to just a few events.

As we find volunteers who are able and willing to assist, we look forward to offering CEUs for more events.

Please leave a message at the Jung Society office if you are interested in volunteering.

www.jungseattle.org

Program Notes

The programs for 2004-2005 cover a broad spectrum of interests designed to offer something for everyone. The Board has been discussing how to establish a balance between outreach and depth in the Society's activities. So please consider what type of involvement you are most interested in and how you might connect with the different types of venues in lectures and workshops offered this year.

If you discover an event that is particularly exciting, then you might also be interested in supporting the **Adopt-an-Event** sponsorship program being organized around the work of promoting, planning, and enhancing these events. Please see *Inside Pages* which lists all of the events planned thus far for 2004-2005 and the types of support activities that you can be involved in. If one, two, three or more individuals work together to **Adopt-an-Event**, not only will the whole society benefit but you can also discover the satisfaction of making possible a relevant and meaningful service to the community. A special Volunteer Incentive will be offered with each event that is adopted! Because the work of planning for the 2005-2006 is beginning immediately, there is also a way for members to **Create-an-Event** by proposing a topic or speaker that is close to the heart. Please see *Inside Pages* for the **Adopt-an-Event** for more details.

As an extension of the Society's 30th Anniversary Conference *Portals to Psyche* held on March 13, 2004 at the Seattle Art Museum, an ongoing series of four community dialogues devoted to an in-depth exploration of *Psyche and the Spirit of the Times* has started. The first meetings were held at Antioch University on May 21st and July 23rd, with Lee Roloff and George Callan presenting the opening remarks. Be sure to check the Society's web page where you will find updates and more information about the upcoming discussions on September 17th and November 5th (www.jungseattle.org/s04/s04psyche.html).

If you would like a booklet containing the talks presented by morning panelists at the *Portals to Psyche* conference, please place an order with the office by e-mail jungseattle@yahoo.com or phone (206-547-3956). The cost is \$6.00 + \$2.00 for shipping. Audiotapes are also available of both the morning and afternoon sessions for \$6.00 + \$2.00 for shipping. An electronic version of Terry Gibson's Keynote address for the conference is available at jungseattle.org by going to the conference page or by linking directly to www.jungseattle.org/w04/PortalsPresentation.rtf.

Many thanks to David Steinmetz for doing the heavy-duty and detailed work of webmaster. Please see the new page with student internships and volunteer opportunities now posted on the Jung Society web site.

Thanks to all who help to sustain the Society by contributing their time, energies and talents. The more that each of us can be involved either directly or indirectly, the more possible it is for the Society to meet the need for challenging, enjoyable, and individuating experiences. —Connie Eichenlaub, Program Planner

CEUs by the Washington Chapter, National Association of Social Workers (NASW) for Licensed Social Workers, Licensed Marriage & Family Therapists and Licensed Mental Health Counselors. Provider number is #1975-157. The cost to receive a CEU certificate is typically \$15 for an event (lecture and workshop on one certificate) or \$10 for just the lecture or workshop.

Library News

Good News! We now have a box book return by our door at room 222 where you may return all your overdue books and cassette tapes whenever Good Shepherd is open. Building hours are 8 a.m. to 10 p.m. Monday through Friday, 8 a.m. to 6 p.m. on Saturday. They are closed Sundays and holidays. Please look through your shelves and return all those overdue materials. Video tapes must be returned in person when the library is open.

We have received a wonderful donation of 242 books from the estate of Jim Huskey, courtesy of his sister-in-law, Kelsey Tyler. Jim had a great collection of Jungian books including a set of the collected works excerpts in 15 volumes published by Princeton Press in paper. Some of our new additions to the collection are *A Terrible Love of War* by James Hillman, *Jung and the Making of Modern Psychology: The Dream of a Science* by Sonu Shamdasani, *The New God Image* by Edward Edinger and *Balancing Heaven and Earth, A Memoir* by Robert A. Johnson.

We will have copies of Geri Grubb's book, *Bereavement Dreaming* for sale at her September lecture and workshop. We have in our lending collection the *Dreambody* books by Arnold Mindell and have ordered *The Quantum Mind* and *Quantum Mind and Healing*. Mindell suggests that if anyone wants to buy his books, they are available online at Amazon.com and abebooks.com. We have Ruth Lowinsky's book, *Stories from the Mother Line*. One of the first books about Sabina Spielrein and her relationship with Jung is *A Secret Symmetry* by Aldo Carotenuto. This relationship is also discussed in many of the Jung biographies, particularly, *A Most Dangerous Method: The Story of Jung, Freud and Sabina Spielrein* by John Kerr and *Jung: A Biography* by Deirdre Bair. If Spielrein's doctoral dissertation is available in English I hope to obtain a copy of the library.

—Bunny Brown, Librarian

Membership

Since our Spring edition of the newsletter fifty five members have renewed their membership. Nancy Alvord has again supported us at the Sustaining level, and our continual thanks go to her. Others are:

Dee Barnes	Crystal Cooper	Siren Hakimi	Traudi and John	John Soderberg
Ann Blake	Joan Dinkelspiel	Nancy Hartscock	Krausser	Barbara Sperling
Louise Bode	Mary Beth Dunn	Debra Harvey	Tanya Maurer	David Steinmetz
Diane Bogue	Seven Dunsmore	Marla Herbig	Mark McNeil	Megan Davis and
Adelaide Brooks	Georgann Felatico	Ladson and Darlene	Sally Parks	Paul Stevenson
Bunny Brown	Cordy Fergus	Hinton	Kerry Ragain	Lynn Stone
Lori Ann Brudvik	Deborah Ferguson	Faith Hogan	Dani Riggs	Janet Tatum
Lindner	Joyce Ferm	Virginia Hoyte	Laura Rivendell	Charlotte Underwood
Lalo Bruhl	Terri Gaffney	John Imre	Leslie Schwartz	Mickey Voegtlin
Judith Capili	John Giovine	Susan Jenkins	Cynthia Seely	Gilda Warden
Linda Cavers	Susan Grant	Bette and Dennis	Priscilla Sherotsky	Evelyn Wemhoff
Leslie Ciechanowski	Neil Gray	Joram	Leland Shields	Tom Wilkenson
Kathy Deviny and	Joan Gregory	Bruce Jorgenson	Judith Skenazy	Edith Wollin
Paul Collins	Geri Grubbs			

We have been joined by twenty-two new members whom we gladly welcome:

Harry Abernathy	Martha Evans	Stan Holt	Rita Morris	Susan S. Scott
Sal Barba	Laurie Evans	Adrienne Johanson	Thornber	Marilyn Strong
Dr. Patricia Cassidy	Elizabeth C. Fowler	Judy Knight	Linda and Paul	Selina Sweet
Elizabeth Clark-Stern	Catherine Fox	Andrea Litton	Niebanck	Mark A. Tanski
Patrice Donohue	Dianne Graham	Eileen Louie	David W. Parker	
Deidre Duffy	Patricia Holmes	Katherine Mendenhall	Barbara Ryan	

Autumn 2004

Library Hours

Call 206-547-3956
to verify hours.

Saturdays

12:30 PM – 3:30 PM

Lecture Fridays

From 6:30 PM

Sept 10, Nov 19 &
Dec 10

Jim Huskey

1948 – 2004

We were shocked and saddened to hear of the death of Jim Huskey on March 12, 2004.

Jim was a member of the Society for many years and had many interests in addition to a deep curiosity about Jung and depth psychology. He attended many of the lectures and workshop and asked many astute questions of the speakers. He loved to read and we are grateful that his family selected us to receive many of his wonderful psychology books. He was a Harvard graduate, a teacher, a poet and a follower of the meditation path of Sant Rajinder Singh. We are glad to have known him and grateful he found us in his life.

www.jungseattle.org

C. G. Jung Society, Seattle
Pre-registration for Autumn 2004

Workshops are scheduled pending sufficient pre-registration. Pre-registration is due two weeks prior to the workshop date. Mail this form and payment to: C.G. Jung Society, 4649 Sunnyside Avenue North, Room 222 Seattle, WA 98103. Questions? Call the Jung Society office, (206) 547-3956.

Please check each event for specific fees, times, locations.

I enclose \$ _____ (check or credit card) for pre-registration for the following:

Payment must accompany your pre-registration. No refunds.

Please indicate which event you are signing up for, whether you are including lecture and workshop fees, and any other particulars, including whether you qualify for a member discount.

Charge my Visa MC Number _____ Exp. Date _____
Name _____ Phone _____
Address _____

www.jungseattle.org



C. G. Jung Society, Seattle
4649 Sunnyside Avenue North, Room 222
Seattle, WA 98103

NONPROFIT
ORG.
U.S. POSTAGE
PAID
SEATTLE, WA
PERMIT NO. 1820

ADDRESS SERVICE REQUESTED