



# SPRING 1999 NEWSLETTER

## THEME: The New Millennium

*In confinio mortis* and in the evening of a long and eventful life a man will often see immense vistas of time stretching out before him. Such a man no longer lives in the everyday world and in the vicissitudes of personal relationships, but in the sight of many eons and in the movement of ideas as they pass from century to century.

— C.G. Jung, “Answer to Job,”  
*Collected Works* volume 11, para. 717.

**Terrill L. Gibson, Ph.D.**

*Paradise & Millennium:  
A Jungian Reflection on Cinematic Images of  
the Perfection of Soul in Times of Intense  
Collective Transition*

We all long for paradise. No matter our psycho-spiritual persuasion, no matter how mature and individuated we fancy ourselves to be, no matter how suavely world-wise, we all long for paradise when things get tough. Paradise is home, the peaceful, generative home of full and final beauty and peace we never seem to find in this world. Paradise is the abode of the Soul.

Film and Jungian psychology have many images of this paradisiacal home. These seem to be intensifying and deepening as the millennium approaches. This lecture and workshop will respectfully explore these images and reflect on their possible guidance and challenge in our journey toward the Gates of Paradise. As always with such conversations, no answers are promised, just a broadening and enhancing of our questions.

**Terrill L. Gibson, Ph.D.**, is a diplomate pastoral psychotherapist and diplomate Jungian analyst who practices individual and family therapy in Tacoma. He lectures and writes widely on the basic theme of the integration of psychotherapy and spirituality. He has frequently served as a consultant, faculty member, supervisor and facilitator for a variety of Pacific Northwest universities, social service agencies, corporations, and religious congregations. A book he co-edited with Laura Dodson, Ph.D., *Psyche and Family* (Chiron Press) is his most recent publication.

### **April 9 & 10**

Friday Lecture  
7:30 to 9:30 PM  
Good Shepherd  
Center, Room 202

Fees:  
\$10 members  
\$15 non-members

Saturday Workshop  
10:00 AM - 2:30 PM  
Good Shepherd  
Center, Room 202

Fees:  
\$30 members  
\$40 non-members  
\$25 student/senior  
members  
\$35 student/senior  
non-members

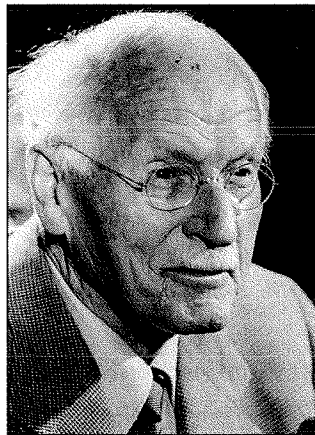
*The Jung Society concludes its 25th anniversary year  
by screening two special films*

## *matter of heart*



*the first public showing of  
Marie-Louise von Franz Interviews,  
Videotaped in the Spring of 1977 in  
her Tower in Bollingen*

**Presentations with producers  
George and Suzanne Wagner**



It all began in 1975 when George and Suzanne Wagner saw the four-hour documentary, "The Sorrow and the Pity," directed by Marcel Ophuls. This film told the story of the tension-filled days in France during World War II. The stories of people from all levels of society were told in personal recollections gathered in interviews done by Ophuls throughout present day France.

The powerful portrayal of a great historical moment through personal recollections inspired Suzanne, then a newly-certified analyst, to suggest to George that such an approach would be effective as a way to capture the history of Jung's life and work, through filmed recollections of individuals who knew Jung well. With the guidance and help of Hilde

Kirsch and James Kirsch, and the many contributions of Sam Francis, Gilda Frantz, and a committee of analysts, the Film Project was launched at the Institute in Los Angeles.

Between 1978 and 1981, forty hours of interviews were filmed with individuals who had known Jung as a teacher, an analyst, a friend, or a family member. Those interviewed included Sir Laurens van der Post, analysts Joseph and Jane Wheelwright, and Jung's grandsons, Dr. Rudolf Niehus and Dr. Dieter Baumann.

The first film to be produced from this original material was the feature length documentary *Matter of Heart*. This film is comprised of excerpts from many of the interviews that describe Jung and some of the essential concepts that form the substance of his lifelong work. It is colorful, very human and potent as it eventually focuses on the survival value of consciousness of the inner world, the tension of opposites within us, and the transformative energies within which can help us unite the opposites and achieve wholeness.

We hope you'll join us Friday, May 21, for *Matter of Heart*, the film the *L.A. Weekly* called "as complete and in-depth a portrait of Carl Jung as we are ever likely to see on film."

### **May 21**

#### **MATTER OF HEART**

Friday  
7:30 to 9:30 PM  
Kane Hall,  
University of  
Washington  
campus,  
Room 220

#### **Fees:**

\$10 members  
\$15 non-members

### **May 22**

#### **INTERVIEWS WITH MARIE-LOUISE VON FRANZ**

Saturday  
10:00 AM - 2:30 PM  
Kane Hall,  
University of  
Washington  
campus,  
Room 130

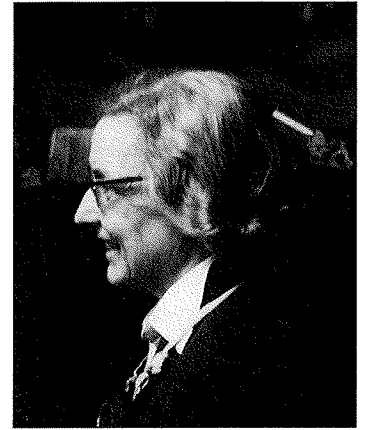
#### **Fees:**

\$20 members  
\$30 non-members

**Preregister** for both film presentations, and pay only:  
\$25 members (save \$5)  
\$35 non-members (save \$10)

## *Interviews with Marie-Louise von Franz*

The two films you will see on this program are unique. They are the core of the interviews the Wagners filmed with Dr. Marie-Louise von Franz in the tower retreat in Bollingen in spring of 1977. She requested that the Wagners withhold from distribution these two interviews until after her death. She died in February of 1998. Since then, these interviews have been shown to small audiences in Los Angeles and San Francisco, and to two Jung clubs. This screening in Seattle on May 22, 1999 will be the first public showing of these reserved interviews in the Pacific Northwest.



George and Suzanne Wagner write: "It was in this tower that von Franz took long retreats from her analytic practice in order to read, write, and commune with the inner world. Since there was no electricity in the tower, a special generator had to be brought in from Zurich and set up so the interior of the tower could be lit for filming. The crew worked hard to set it up in such a way that it would not disturb things too much, but would

---

*Dr. von Franz requested that the Wagners withhold from distribution these two interviews until after her death. . . . This screening in Seattle will be the first public showing of these reserved interviews.*

---

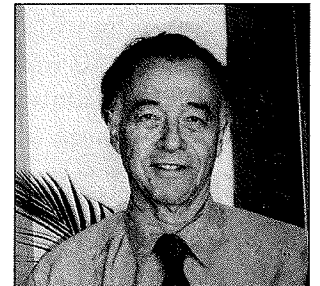
allow the filming to be done properly. Dr. von Franz was very warm and friendly, and with genuine grace even cooked lunch for everyone in her large stone fireplace.

"We are indeed fortunate to have captured Dr. von Franz in her prime, before the Parkinson-like illness that lingered in her later years came on. She is in great spirits in these interviews and gives herself fully to the opportunity to speak through film. The topics of these two interviews range widely, from recollections of her first encounter with Jung, to the meaning of alchemical writings, to problems of women developing a positive relationship to the animus and to creative life, to issues

in love relationships, to synchronicity and to attitudes toward death. There is no doubt that these two hours provide a rich and poignant portrait of Dr. von Franz in her prime, speaking with genuine feeling from the depths of her soul. We owe a great deal to this woman who has helped so many find access to the deepest aspects of Jung's work. These films add a dimension of her personal warmth to her great opus."

Marie-Louise von Franz was a Jungian analyst who practised in Kusnacht, Switzerland, and taught at the C.G. Jung Institute in Zurich. Her writings include *The Interpretation of Fairy Tales*, *Shadow and Evil in Fairy Tales*, *Alchemy: An Introduction to the Symbolism and the Psychology*, and *Lectures on Jung's Typology*.

**George Wagner** is an attorney who served as the first Executive Director of the Jung Institute of Los Angeles from 1973 to 1979. He graduated from U.C.L.A. and Southwestern Law School. Since 1975, George has been the producer of the Film Project for the C.G. Jung Institute of Los Angeles which has given us *Matter of Heart*, *The World Within*, and the twenty-four part video series *Remembering Jung*. He has been married to Suzanne Wagner for 33 years.



**Suzanne Wagner, Ph.D.**, graduated from Mills College with a major in psychology in 1960. She took a Ph.D. from U.C.L.A. in clinical psychology and then studied at the Jung Institute in Los Angeles where she was certified as an analyst in 1973. Suzanne has been continuously in practice as a Jungian analyst since 1973. She has become a senior training analyst at the Jung Institute of Los Angeles and also is an active member of the C.G. Jung Institute of San Francisco. She practiced in Malibu for 19 years and now practices in Sausalito. Over the years she has given lectures to the public, led seminars for the training of analysts, and served on significant working committees of both California institutes.

She is currently working on a paper on dreams related to death.

# Memories, Dreams, and Recollections: Twenty-

This issue of our newsletter marks the end of the Jung Society's twenty-fifth program year.

What follows is a brief, factual overview of the Society's activities over the past twenty-five years.

**1973-74** The Society began as Friends of Jungian Psychology Northwest. It was headquartered in the home of founder Nancy Alvord. Dues were \$5.00. Those who served on the founding board were:

George Doczi, President  
Barbara Peterson, Secretary  
Nancy Alvord, Treasurer, Membership  
Sally Parks, Programs  
Ali Willeford, Publicity, Newsletter  
Dorothy Knudson, Tacoma group  
Virginia DiCicco  
Quentin Fisk  
Virginia Hoyte  
Pat Lantow  
Jim McDermott  
William Willeford

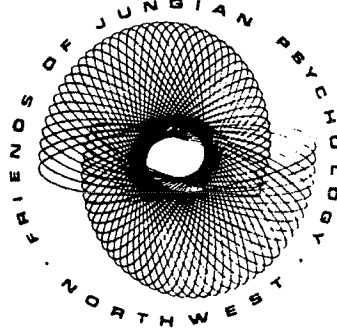
The Friends of Jungian Psychology Northwest offered its first public programs, evenings with sandplay therapist Dora Kalff, and with mythologist Joseph Campbell.

**1976** The Friends of Jungian Psychology Northwest was located at 2423 NE 54th St. Dues had increased to \$7.50 for a single membership; for a student, \$5; for a contributing member, \$25; and for a sustaining member, \$50.

**1979** The Friends of Jungian Psychology Northwest was located at 6328 - 22nd Ave. N.E.

**1980** The 22nd Avenue N.E. location was short-lived. The Friends used a post office box for its address, and the library was stored in a board member's home.

**1981** The bird in a tree of life logo was created by Anna Hayes, and was first used in the Fall of 1981 newsletter. Dues were \$15 for a single membership, \$25 for a contributing membership, and \$50 for a sustaining membership.



**1984-85** At the annual meeting, the name of the organization was changed to C.G. Jung Society, Seattle. The Society still did not have an office/library space; programs were held at the North Area YWCA. Featured on the program that year was Robert Johnson on active imagination. Sustaining members' dues had increased to \$75, contributing members' dues were \$50, an individual membership was \$25, a couples membership was \$40, and student/senior/low income membership was \$15. A non-member could subscribe to the newsletter for \$3.

**1986** The Society began meeting at Cornish College of the Arts, and housed its library there, too. That year, the films *Matter of Heart* and *Way of the Dream* were shown. Board members were:

Bill Levy, President  
Celia Hartley, Vice President, Education  
Committee  
Bunny Brown, Treasurer  
Mary Lowry, Secretary  
Mardonna Austin-McKillop  
Harold Johnson  
Sophia Torelli, Library  
Diane Bogue, membership  
Debra Laurent Okuma, Newsletter  
David Hufford, Program  
Kathleen O'Connor, publicity

Serving on the advisory board were:

Nancy Alvord  
Sally Parks  
Russell Lockhart

**1987** Programs to this point had usually been held on Monday evenings. That year, the present Friday evening lecture and Saturday workshop format was adopted.

**1990-91** Membership, which had seriously declined in the early 1980's, now saw a period of growth, and topped 350. Under Bette Joram's presidency, the Society began seeking in earnest office space and a computer, necessities for an organization of that size. Finally, the Society relocated to the University Heights Center.

**1992** The library had grown to approximately 900 volumes. Membership fees were again increased, this time to \$90 for a sustaining membership, \$60 for a contributing membership, \$30 for an individual

## Five Years of the C.G. Jung Society, Seattle

membership, \$48 for a couple, \$18 for a student/senior/low income, \$6 for a newsletter subscription.

Board members were:

Kate Millard, President  
David Hufford, Vice President  
Traudl Selves, Recording Secretary  
Marilyn Lamont, Treasurer  
Diane Bogue, Cashier  
Bunny Brown, Membership, Office Manager  
Steve Brundage, Facilities  
Lucretia Devine, Rosalie Gorfkle, Programs  
Art Hopkins, Publicity  
Ken Kimmel, Carl Lipkin, John Radecki,  
Members at large  
Bob Quinn, Library  
David Steinmetz, Newsletter  
Kurt Vance, Margaret Swanson-Vance,  
Hospitality

**1994-95** The program theme was aptly named "Trauma and Rebirth," as the Society lost both its meeting space and its office space in quick succession. The Cornish College of the Arts meeting location was no longer available, due to Cornish's increased student enrollment. The Society lost its office/library space when the Seattle School District began using University Heights as a school again. Programs during this time were held at the Wallingford Senior Center, the Community Mental Health Center, and the Phinney Neighborhood Center.

**1995-96** The Society moved to its present location in Room 345 of the Good Shepherd Center, and began holding its programs, for the most part, in Room 202 of the Good Shepherd Center. Our web site was established.

**1997** The Kate Millard Memorial Library Collection was established. The library entered a period of tremendous growth, nearly doubling its number of volumes. The Society received a donation of an IBM 386 computer.

**1998-99** The library stands at over 1,550 volumes, crowding Room 345 of the Good Shepherd Center, and the Society is seeking a larger space. Membership has held steady at approximately 200 members over the last several years. The Society is upgrading to a larger, more powerful computer system. We continue to strive to bring our members quality programs. Our theme for the 1999-2000 program year will be *Dreams*.

Serving on this year's board are:

Karen Campbell, President, Newsletter  
John Krausser, Vice President, Membership  
Connie Eichenlaub, Secretary  
Erwin Buske, Co-treasurer  
Barbara Vicent, Co-treasurer  
Diane Bogue, Cashier  
Bunny Brown, Office Manager  
Lucretia Devine, Past President  
Laurene Peterson, Publicity  
Linda Sheaffer, Library  
Peter Elting, Advisor to the Board for Programs

**CELEBRATE!** Our annual meeting of the membership will be held on May 22, in Room 130 of Kane Hall, from 2:00 to 2:30 PM (immediately following the von Franz videos). A presentation honoring past board members is planned. If you have served as a board member, we hope you will attend. If you are a member, this event is not to be missed!

A reception will follow the annual meeting. Details on location, not available at the time this newsletter goes to press, will be announced.



### C.G. Jung Society, Seattle

The Society's office and library are located in the Good Shepherd Center, 4649 Sunnyside Ave. N., Room 345.

Phone (206) 547-3956 • Fax (206) 547-7746

Find us on the web at <http://www.eskimo.com/~dcs>

## Library News

### Library Hours

#### Mondays

March 8, 15, 22  
April 12, 19, 26  
May 3, 10, 17, 24  
June 7, 14, 21, 28  
11:00 AM to 5:00 PM

**Tuesday**, June 1  
11:00 AM to 5:00 PM

#### Fridays

March 12  
2:00 to 7:30 PM  
and prior to  
lectures  
and

**Saturdays**, March  
through May  
12:30 PM to 3:30 PM

Closed holidays,  
including Easter  
week, April 2 - 9,  
and Memorial Day  
weekend.

Books may be  
returned to the  
book drop across  
the hall from our  
library any time  
the Good  
Shepherd Center  
is open, Monday  
through Friday,  
8:00 AM to 10:00 PM,  
Saturday 9:00 AM  
to 5:00 PM.

The library book catalogue is now on the computer EXCEPT FOR THOSE OVERDUE BOOKS! If you have any books, journals or tapes that belong to the Society library and seem to have taken up residency with you, please return them. They are guaranteed an "address" in the computer file for easy location. We have between 1,500 and 1,600 books on our shelves. The computer catalog allows us to locate books for you by title, author or editor, and subject matter. Our journal selection is limited but is in order and readily accessible. Our tape collection of Society speakers and workshops is getting a thorough overhaul by Bunny Brown. Recent donations are catalogued and on the shelves. Journals and tapes are in the process of being catalogued. Long term goals include getting all library items catalogued in the Dewey decimal system and developing a method to better track checked out materials.

New on the shelves, and of special interest to those of you doing research on Jungian psychology, is *C. G. Jung: Critical Assessments*, edited by Renos Papadopoulos. This four-volume set is a collection of essays by such authors as James Hall, John Beebe, Polly Young-Esdrath, and Aniela Jaffe, among others. Volume I is *Jung and His Method in Context*, Volume II, *The Structure and Dynamics of the Psyche*, Volume III, *Psychopathology and Psychotherapy*; Volume IV, *Implications and Inspirations*.

The fund for new book shelves continues to grow through book sales and donations. We are still in need of donations—suggested donation is \$6. Remember, these shelves become part of the assets of the Society and move with the library regardless of location.

We depend strictly on volunteers to have the library open. If you have some hours and want a pleasant place to spend them, consider volunteering at the library. Its success depends on its availability to interested persons. We would like to keep the library open a minimum of three to four hours a week during July and August. If you are interested in volunteering, please leave a message at the Society office and I will get back to you. The hours and days of the week are flexible to fit individual schedules. Many thanks to winter volunteers Judith Capili, Bunny Brown, Fern Durand, Connie Eichenlaub, Kitty Eppard, Arlene Nicki Hagoski, and Shelly Dempsey.

Please call (206) 547-3956 to hear the message for updated library hours.

—Linda Sheaffer

## Membership

Recent membership activity has seen 21 renewals and 10 new members. Thanks to all.

### Renewing Members

Karen Campbell has again renewed at the sustaining level. Our sincere thanks, Karen, for your support of our society. Other renewing members are:

|                   |                          |
|-------------------|--------------------------|
| Dr. Sydney Baggs  | Trip Quillman            |
| Jean Beckey       | Janet Ross               |
| Erwin Buske       | Dick & Heather Russell   |
| Randy Dixon       | Joe Rutte                |
| Connie Eichenlaub | Linda & Michael Sheaffer |
| Raleen Gold       | Wendy Swan               |
| Gretchen Hegeman  | Vickie Tomlinson         |

Jim Huskey  
Sonja Kim  
Charles Ludwig

Rose VandenBerghe  
Anya Woestwin

### New Members

Warm greetings to our new members also:

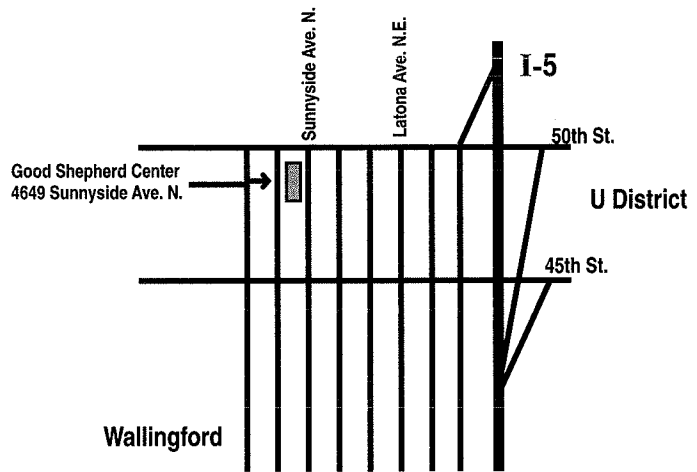
|                 |                  |
|-----------------|------------------|
| Iris Coover     | Meredith Kaplan  |
| Nancy Davenport | Paul Kragt       |
| Jemila Dwyer    | Mary Latham      |
| Ellen Fox       | Dorothy Paun     |
| Jeff Hogan      | Kathleen Tyrrell |

—John Krausser

## Driving Directions

### Directions to the Good Shepherd Center 4649 Sunnyside Avenue North:

From Interstate 5, take the 45th Street exit. Travel west toward Wallingford. Turn right from 45th onto Sunnyside Avenue North and travel to the Center on the left side of the street at 4649, just before Sunnyside intersects with 50th Street. Follow entry drive left to the parking lot south of the building. Enter the building at the main entrance.



*Feel free to copy this form, if you prefer not to cut this newsletter.*

### C. G. Jung Society, Seattle Pre-registration for Spring 1999 Programs

Workshops are scheduled pending sufficient pre-registration. Pre-registration is due two weeks prior to the workshop date. Mail this form and payment to:

C. G. Jung Society, Seattle  
4649 Sunnyside Avenue North, Room 345  
Seattle, WA 98103

Questions? Call the Jung Society office, (206) 547-3956.

I enclose \$\_\_\_\_\_ (check or credit card) for pre-registration for the following:

- April 10th workshop with Terrill L. Gibson, *Paradise & Millennium*  
Fees: \$30 for Society members / \$40 for non-members  
\$25 for student/senior members / \$35 for student/senior non-members
- May 21st and 22nd film presentations, *Matter of Heart* and *Interviews with Marie-Louise von Franz*  
Fees: \$25 for Society members / \$35 for non-members

### Membership Application or Renewal

I enclose \$\_\_\_\_\_ (check or credit card) for payment of dues, according to the following schedule:

|                     |       |                              |       |
|---------------------|-------|------------------------------|-------|
| Sustaining Member   | \$250 | Couple (same address)        | \$ 65 |
| Contributing Member | 90    | Student/Senior               | 25    |
| Individual Member   | 40    | Newsletter subscription only | 8     |

Charge my VISA MC Number \_\_\_\_\_ Exp. Date \_\_\_\_\_

Name \_\_\_\_\_

Address \_\_\_\_\_

**Payment must accompany your pre-registration. No refunds.**

*Support the Society —  
Order Books Online*

Now whenever you visit the Jung Society's web page, live links from any book or video listed on our web site will take you directly into Amazon.com's catalog. Primarily, this will make it easier to learn about or to purchase books that presenters have written or recommended.

Once you enter the Amazon.com catalog from the Society's web page, you can search in the usual way for any book, video, or CD in Amazon.com's inventory.

The Society earns a small commission on any purchases you make following a direct link to Amazon from a book link on our site. (Note that the commission does not change the book's sale price—there is no additional charge to the book buyer.)

You'll find our web page at [www.eskimo.com/~dcs](http://www.eskimo.com/~dcs).

*Annual Meeting of  
the Membership*

May 22, 1999

2:00 to 2:30 PM

Kane Hall, Room 130

immediately following the  
von Franz interviews

Not all details were confirmed at press time.  
Members will receive invitations and further  
information in the mail.



**C. G. Jung Society, Seattle**  
4649 Sunnyside Avenue North, Room 345  
Seattle, WA 98103

NONPROFIT  
ORG.  
U.S. POSTAGE  
**PAID**  
SEATTLE, WA  
PERMIT NO. 1820

ADDRESS SERVICE REQUESTED