

C. G. Jung Society, Seattle

# NEWSLETTER

Summer 1990



**ALICE O. HOWELL  
JUNGIAN SYNCHRONICITY  
IN ASTROLOGICAL SIGNS  
AND AGES**

TUES., MAY 29 7:30 P.M.  
KANE HALL ROOM 210  
UNIV. OF WASHINGTON  
\$10 MEMBERS  
\$15 NON-MEMBERS

In this lecture, based on her just-published book by the same name, Ms. Howell will explore the relationship of the astrological signs to the self-acceptance, deeper understanding, and healing of the individual psyche. She will discuss astrology and its relevance to the Collective Unconscious, the astronomical basis for the Age of Aquarius, and the synchronicity between the past five astrological Ages and the development of human consciousness, as illustrated by our mythological and religious symbolism. She will also indicate the traps that lie in wait for humanity in the coming Age. The lecture will be followed by a time for interaction with the audience.

Dr. Howell, a former faculty member of the C.G. Jung Institutes of Los Angeles and Chicago, is a professional astrologer and a widely-known lecturer, and is recognized as a pioneer in linking psychology and astrol-

**TERRILL L. GIBSON, Ph.D.  
JUNGIAN  
PSYCHO-THEOLOGY—  
GNOSTIC, MYSTICAL,  
ALCHEMICAL,  
JUDEO-CHRISTIAN?**

MON., JUNE 11  
7:30 P.M.  
CORNISH NORTH  
\$3 MEMBERS  
\$5 NON-MEMBERS

Jung denied that he was a theologian. Yet, a growing number of analysts, theorists, and scholars find that assertion obviously invalid. There is an accelerating consensus that Jung may have been one of the most fecund and provocative theologians of his era. The psychology he left for us to develop possesses profound theological commitments. Was Jung and his psychology Gnostic, mystic, alchemical, Judeo-Christian, Universalist?

ogy. By the age of 18, she had lived in or traveled to 37 countries on four continents and studied comparative religion, mythology, and literature. Besides the just published book and her earlier *Jungian Symbolism in Astrology* and *The Dove in the Stone*, she has published a book of poetry, *The song of Magdalen*, and won several awards for her poetry. Her home is in Monterey, Massachusetts.

## IN THIS ISSUE

- Alice O. Howell Tues 5/29  
Jungian Synchronicity in  
Astrological Signs and  
Ages
- Terry Gibson Mon 7/11 6/11  
Jung & Theology
- Bob Carlson Mon 7/25 6/25  
A Glass Work Artist  
The Parsifal Myth & The  
Artist's Journey
- Jung Society Picnic Sat 7/28
- James Lucal Sat 8/4  
Soulplay: Theater of the  
Inner Life

This lecture will explore these questions and suggest a model of the integration for the practice and implementation of analytical psychology that highlights these theological foundations. Frequent use of personal and clinical anecdote will punctuate the lecture's major themes.

Terry Gibson is a Jungian analyst who heads the Pastoral Therapy Associates in Tacoma, WA. He is a member of the Northwest Society of Jungian Analysts.

**BOB CARLSON**  
**THE PARSIFAL MYTH AND**  
**THE ARTIST'S JOURNEY**  
 MON., JUNE 25  
 7:30 P.M.  
 CORNISH NORTH  
 \$3 MEMBERS  
 \$5 NON-MEMBERS

This evening of slides and a personal presentation on the creative process promises to be a highly interesting one which will allow for interaction with members of the audience. Using religious symbols and myths from around the world and throughout time, Seattle glass artist Bob Carlson has found a means of expressing his own experience of the numinous power, both terrifying and wondrous, that life is. From a passion for mythology and spirituality as experiential phenomena, he studied psychology, art, and math at City College of New York, and has also studied yoga, Kung-Fu, Tai Chi, Zen Buddhism, and Taoism.

Strongly influenced by the writings of Carlos Castaneda, Bob left City College for Arizona in 1974 and lived and worked in Tucson for the next 13 years before moving to the Seattle area in 1987. Bob's work in glass began in 1981 when he was introduced to the possibilities of the material by his friend and future partner Tom Philabaum. Dale Chihuly, Billy Morris, and John Ormbrek showed up at the Tucson studio in 1981 to create their work there. Bob became an instant convert, dissolved his construction business and devoted his full attention to glass. He worked with Tom Philabaum and studied and worked at Pilchuck. In 1984 he formed Philabaum/Carlson Studios with Tom. At the Provincial Museum of Anthropology in Victoria, British Columbia in 1983, Bob,

**JUNG SOCIETY**  
**PICNIC**

SATURDAY, JULY 28  
 1:00 P.M. - 4:00 P.M.  
 LINCOLN PARK  
 (follow signs from entrance)

All members are invited to a summer picnic in honor of C.G. Jung's birthday (July 26). We extend a special invitation to any members who have joined within the past year. This will be an opportunity for continuing members to welcome and socialize with new members. There will be entertainment (guitars and other musical instruments as well as our voices joined in song). We encourage our artist members to bring any work which can easily be shared in this setting. Bring enough of your favorite picnic dish to share. The Society will provide a cake in Jung's honor.

deeply moved by the profound psychological and spiritual power of the Northwest Indian artists, began to realize what his own art could be. In 1985 he created the first works from this experience. He has been producing works of intricately painted patterns, symbols, and motifs since. He has taught at the Pilchuk School, and the Pratt Fine Arts Center in Seattle, and had several solo exhibitions, as well as group shows. His work has been written up in *Glass Art Magazine*, *Glass Work Magazine* and other periodicals and newspapers around the country.

JAMES LUCAL, MA

**SOULPLAY:**  
**THEATER OF THE**  
**INNER LIFE**

SATURDAY, AUGUST 4  
 CORNISH NORTH

10:00 A.M.-5:00 P.M.  
 \$30 MEMBERS  
 \$40 NON-MEMBERS

Mythic patterns shape our lives and often direct our destiny. We all have particular gods and goddesses dwelling within us. Soulplay offers an opportunity to explore, through sound, movement, and dramatic enactment, the connections between archetypal story and personal experience. In bringing the vivid scenarios of myth to life and incarnating the timeless deities, we find their unique voice, gesture, and action within ourselves. Soulplay enables us to recognize the reverberations of myth in our own experience and daily life and so enlarges our personal story.

This workshop will be highly experiential. Attention will be directed toward creating an atmosphere in which it is safe and comfortable to take risks in spontaneous self-expression. No previous experience with acting is required or expected.

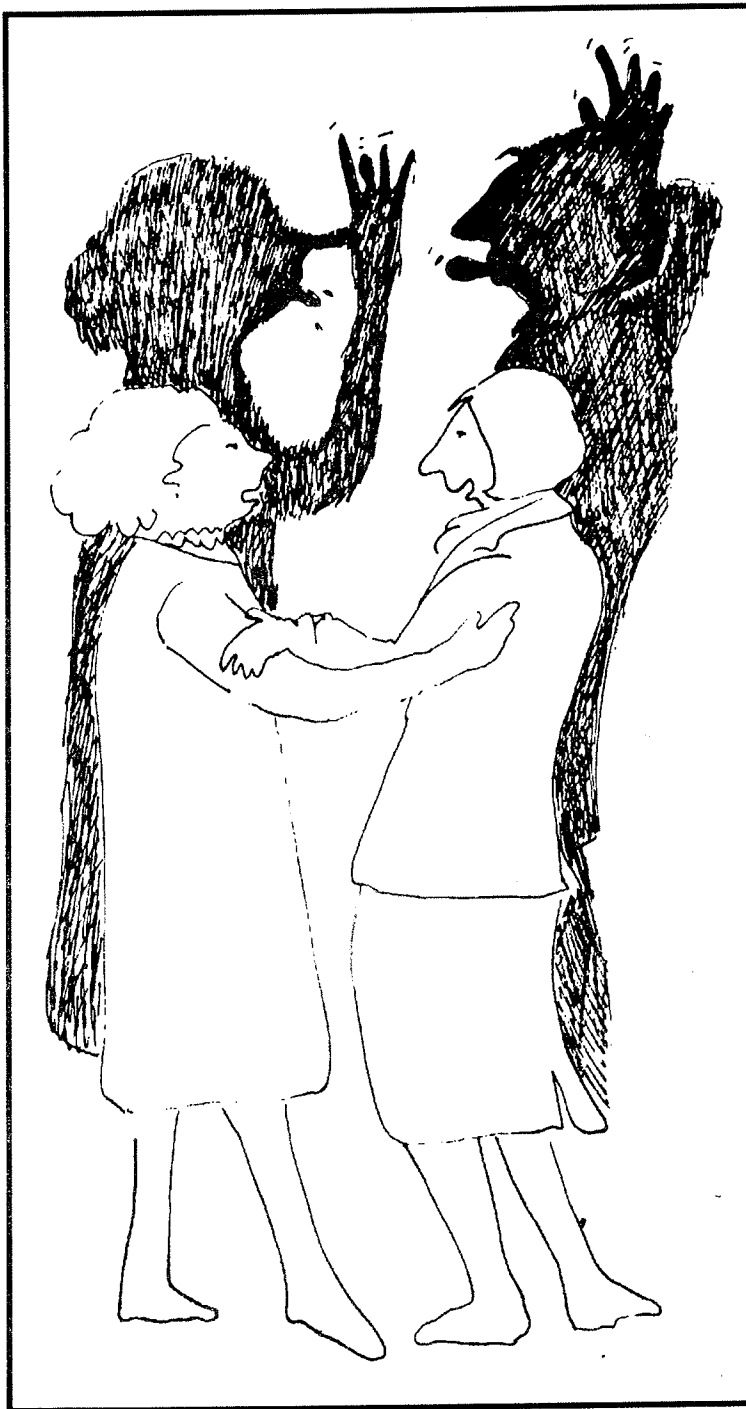
Bring a story that fascinates you.  
 Be prepared to play!

**James Lucal** is a therapist, educator, and thespian with 10 years' experience leading groups. He is currently director of Mythos Studio, a center in Seattle dedicated to the spontaneous dramatization of personal and universal story. With an extensive background in psychodrama and improvisational techniques, he is now directing non-scripted theater ensembles both in Seattle and on Lopez Island where he makes his home. If you have any questions, James can be reached in Seattle at 726-6097.

## In The Community

A LECTURE BY  
**JAMES HILLMAN**  
SPONSORED BY THE RE-  
SOURCE INSTITUTE

On July 14, The Resource Institute will sponsor a lecture by James Hillman from 8:00-10:30 PM at the Museum of History and Industry, 2700 24th Ave. E. The lecture will discuss how the media influence the myths of our day with particular emphasis on the ethical issues related. Tickets are \$12 (\$10 students & seniors) and will be available at the Elliott Bay Book Company or call The Resource Institute (784-6762) for further information.



This cartoon was drawn by **Susan Wallace** and though published elsewhere, she gave us permission to use it. It is untitled but perhaps it says something about the archetype called **The Shadow**.

editor's comment

# THE SHAPE OF THINGS TO COME

## SEPTEMBER 1990

W. LADSON HINTON  
*Reflections on the Animal Soul*  
Lecture: Friday, September 14,  
Workshop: Saturday, Sept 15

CENTERPOINT I & II  
ORGANIZATIONAL  
MEETING  
Monday, Sept 17

TOM PAUTLER, MD  
*The Wounded Healer*  
Lecture: Friday, September 28  
Workshop: Saturday, Sept 29

## OCTOBER 1990

*MATTER OF HEART* (Film)  
with George & Susan Wagner  
sharing their experience of making the film.

Friday, October 12  
The Neptune Theater

WORKSHOP WITH GEORGE & SUSAN WAGNER  
Presenting their video archival materials.

(never publicly presented before, discussion following)

Saturday, October 13  
Cornish North

GARY ASTRACHAN  
*Dionysus*

Lecture, slides, tapes  
Friday, October 19,  
Saturday, October 20

## NOVEMBER 1990

LEWELLYN VAUGHN LEE  
*Dreamwork Within A Tradition*  
Friday, November 2  
Saturday, November 3

DAVID HUFFORD  
*Jungian Psychology & Midlife*  
Monday, November 12

## DECEMBER 1990

PETER MUDD  
*The Dark Self: Death as a Developmental and Transferential Factor*  
Friday, November 30  
Saturday, December 1

## JANUARY 1991

JOHN SANFORD  
*Lesser Known Goddesses of the Greeks*  
Friday, January 25  
Saturday, January 26

## FEBRUARY 1991

ERICA MEADE  
*Creativity and the Creation Myth*  
Friday, February 15, 1991  
Saturday, February 16, 1991,



The Society needs volunteer help in any of the areas listed below. If you would like to contribute some time, please give us a call at 782-6877 or write to P.O. Box 19243, Seattle, WA 98109.

**By-Laws Committee:** Review & revision to existing by-laws

**Facilities:** Preparation & set-up of events and taping of presentations

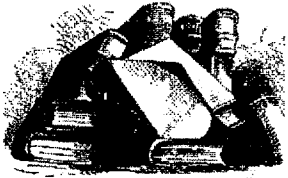
**Hospitality:** Organization of social gatherings and preparation of refreshments

**Newsletter:** Acquiring copy from presenters and/or writing, editing, typing

**Program Committee:** Planning of future presentations

**Publicity:** Preparation, copy, and distribution of flyers & other publicity arrangements





**SOCIETY LIBRARY  
NOTES**

Society library books and tapes can be returned in three ways:

1. Mailed to the Society at:  
P.O. Box 19243  
Seattle, WA 98109
- 2 Mailed to or dropped off at the "Book Drop":  
6544 11th N.W.  
Seattle, WA 98117
3. Returned to the library coincident with a Society event at Cornish North (1501 10th Ave. E.)

*THANK YOU!*

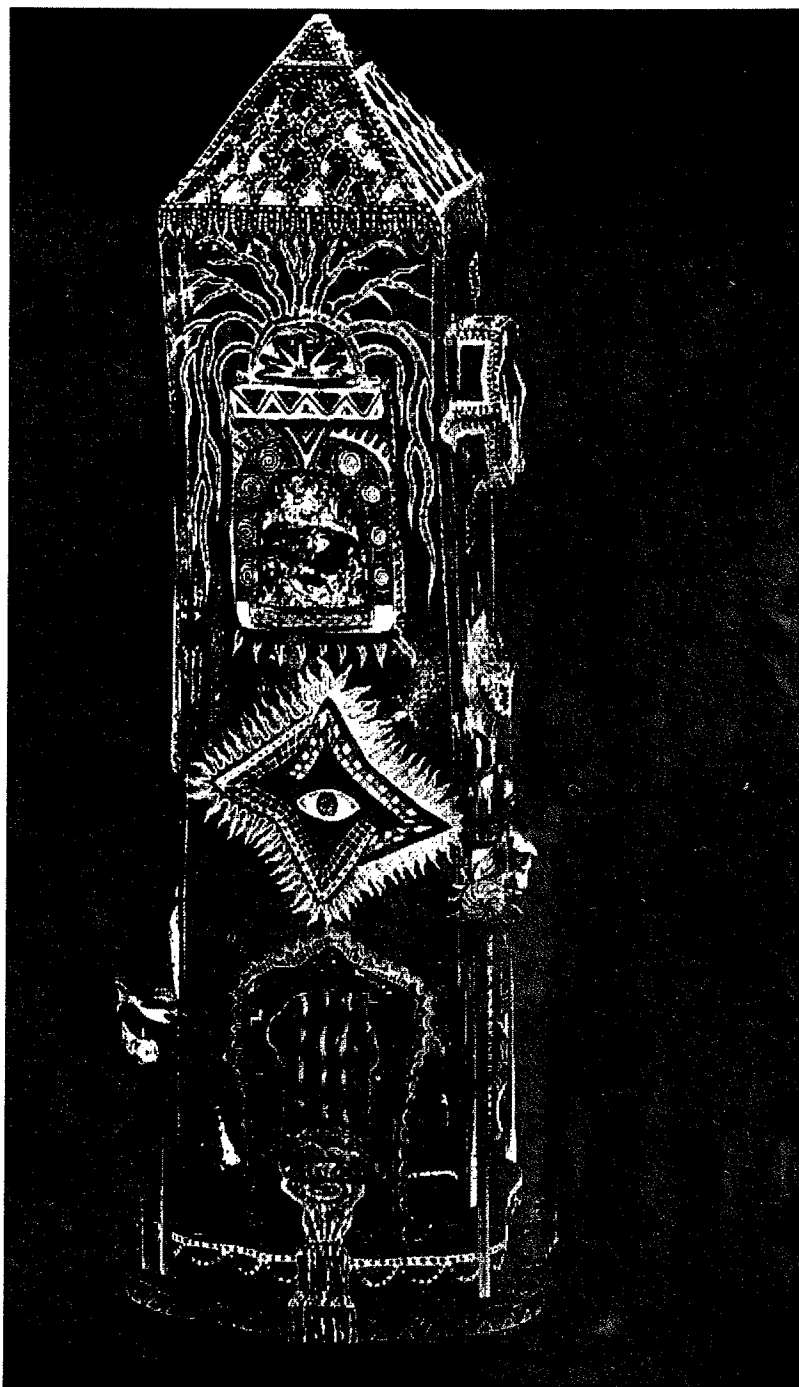
A very special thank you to Virginia Schindler who has been coordinating the volunteers' efforts and wrestling with our P.A. system. She has accepted a huge task as Facilities and Hospitality Chairperson, and her efforts are very much appreciated.

The Board wishes to thank the following people for so graciously volunteering their ideas and time for event preparations, publicity production and distribution, compiling and editing our newsletter, and working in our library.

Teresa Beck	-	Event set-up, publicity
Bill Downey	-	Library
Martha Drachenburg	-	Event set-up, taping & P.A.
Arthur Hopkins	-	Publicity flyers
Astrid Larsen	-	Event set-up
Bob Quinn	-	Event set-up, P.A., refreshments
Madelle Quiring	-	Newsletter, event set-up
Virginia Schindler	-	Facilities & hospitality, volunteers
Kurt Vance	-	Event set-up
Margaret Vance	-	Event set-up, refreshments

In compiling an updated catalog of Society library holdings, we have noticed that some books no longer appear to be in our collection. We believe this is due to the self-service nature of the lending library and that possibly the pocket cards were not left at the library when the books were checked out. We would greatly appreciate it if the membership could look through their bookshelves and see if any of the materials listed below are there. They can be returned by one of the three methods above.

- Jungian Psychology*, Tom Laughlin
- Paracelsus: Selected Writings*, Jolanda Jacobi
- Marriage: Dead or Alive*, Guggenbuhl-Craig
- Betwixt and Between: Patterns of Masculine and Feminine Initiation*, Louise Mahdi
- Success & Failure in Analysis*, Gerhard Adler
- The Mythic Image*, Joseph Campbell
- A Comprehensive Dictionary of Psychology & Psychoanalytic Terms*, Horace & Ava English
- The I & the Not I*, M. Esther Harding
- Emotion: A Comprehensive Phenomenology of Theories & Their Meaning*, James Hillman
- Asklepios: Archetypal Image of the Physicians Existence*, Karl Kerenyi
- Psychoanalytic Schools from the Beginning to the Present*, Deiter Wyss
- Female Authority*, Florence Weidemann & Polly Young-Eisendrath
- The Way of Individuation*, Jolanda Jacobi
- Apparition & Precognition*, Anjela Jaffe
- African Folktales*, Charlotte Lelau
- A Dictionary of Classical Antiquities*, Oscar Seyffert



This photograph of Robert Carlson's sculpture titled, "*Joseph's Last Dream*" doesn't begin to do it justice as it must be seen in both color and in three dimensional space. Nevertheless it is presented here to convey a little of the power and scope of his work.

editor

**C. G. Jung Society, Seattle  
Registration Sheet--Summer 1990**

Make checks payable to: C. G. Jung Society, Seattle  
P.O. Box 19243  
Seattle, WA 98109

Feel free to Xerox this form if you'd prefer not to cut it out.

I enclose \$ \_\_\_\_\_ for enrollment in the following (please circle)

Lucal Workshop	8/4	\$30*	Sustaining member	\$75
			Contributing member	\$50
			Individual member	\$25
			Couple (same address)	\$40
			Student/Senior	\$15
			Mailing List ONLY	\$ 5

\*This is the pre-registration fee for both members and non-members.

Charge my <sup>(Circle one)</sup> Visa MC \$ \_\_\_\_\_ Number \_\_\_\_\_ Exp. date \_\_\_\_\_  
 Name \_\_\_\_\_ Comments \_\_\_\_\_  
 Address \_\_\_\_\_  
 Phone \_\_\_\_\_

**STATEMENT OF PURPOSE**

In a century of discovery, of scientific expansion, of political conflict and catastrophic destruction, one man's voice sounds clearer and clearer.

C. G. Jung entered the inner reaches of the human mind, to touch the human heart. He learned that by honestly facing personal conflicts on the most everyday level, we can confront the deep set spiritual problems of universal human concern.

At a time when others sought precise answers and certainty, he probed into the unknowable mysteries of love and healing.

When so many devoted their genius to creating the means to

destroy the world, he went inward on a lonely and dangerous journey, discovering those creative synthesizing forces within the human psyche that might enable the world to survive.

Jung's life, his mission, his voice, and his personal experience are a challenge and a source of illuminating hope in this dark and perilous time.

This newsletter is published three times a year by the C. G. Jung Society, Seattle, a non-profit educational corporation since 1972. The purpose of the Society is to promote the interest in and an understanding of analytical psychology and the cur-

rent use of Jungian concepts by contemporary thinkers through lectures, seminars, study groups, and the maintenance of a library. By exploring these viewpoints we hope to better understand ourselves and gain new insights into our relationships, our culture and our world.

Programs are, for the most part, intended for the general public.

The mailing address for the Society is:

P.O. Box 19243  
Seattle, WA 98109

For information call the Society at:

(206) 782-6877.

ADDRESS CORRECTION REQUESTED

C. G. Jung Society, Seattle  
P.O. Box 19243  
Seattle, WA 98109

NON-PROFIT ORG.  
U.S. POSTAGE  
PAID  
PERMIT NO. 1820  
SEATTLE, WA

### **Cornish College of the Arts: Cornish North Location**

The Cornish North location of Cornish College of the Arts is at 1501 Tenth Avenue East, just north of St. Mark's Cathedral. To park behind Cornish North take the driveway between St. Mark's and Cornish (a red brick building), then turn right at the end of the building through the brick arch. The back door opening onto the parking lot will be open. There is a bus shelter in front of St. Mark's and easy access from downtown and the University District by way of Broadway/Tenth Avenue.

### **Society Library: Cornish North Location**

The Society lending library is located at the Cornish North classroom, Room 122N, 1501 10th Avenue E. This collection is available for use coincident with all scheduled Cornish events. Please note that the Society collection of taped lectures, seminars, and workshops is now located at the lending library. A list of our book and periodicals collection is available to members at the library. The library will be open for the three summer events: June 11, June 25, and August 4.

The hardbound copy of *Collected Works*, all periodicals, and many of our rare or out-of-print books are housed at our Research Library, located in a private home. If you would like to utilize any of these materials, please feel free to call the Society at 782-6877 and we will gladly make the materials available to you.

If you wish to volunteer to work on the Society library, make donations of books, or have any questions about our collection, call our librarians Bette Joram, 937-6830 or Bunny Brown, 632-4892.