

C. G. Jung Society, Seattle

NEWSLETTER

Spring 1989



"Failed Aphorisms"

A Poetry Reading

Presented by

Anne Pitkin, M.A.

Monday, May 8 7:30 pm

Cornish North

Members \$3, Non-members \$5

Anne has an MA in English and has taught at Bellevue Community College for a number of years. She completed an MA in psychology at Antioch University, Seattle, in December. Her work has appeared in *The Nation*, *Poetry Northwest*, *New England Review*, *Breadloaf Quarterly*, *Ploughshares*, *The Malahat Review*, *Ironwood*, *Seattle Review*, and a number of others. A short collection of her work, *Notes for Continuing the Performance*, was published in 1977. A full length collection, *Yellow*, is being published this spring by Arrowood Books, Incorporated.



"Labore Est Orare"

To Work is to Pray.

*To Paint is to Weave Links
in the Great Web of Being.*

Presented by

Denita Benyshek

Monday, May 15 7:30 pm

Cornish North

Members \$3, Non-members \$5

Artist Denita Benyshek will describe the evolution of her creations illustrated with slides. She inherited the symbolic, romantic, and occasionally dark fairy tale quality of Slavic art from a childhood immersed in cycles of fecundity/mortality in the pantheism of farmers, gardeners, fishing folk and hunters. Not making inbred art about art, her inspiration rises from intimate / monumental shamanic experiences, visions, dreams, ecstasy.. personal psychological processes. She will conclude the evening with a new performance, described as a "Five Minute Sketch in Small Space for Intimate Context."

Annual Membership Meeting

Saturday Evening

May 6, 1989

7:30 pm to 10 pm

Parish Rooms

St. Stephen's Church

4805 N.E. 45th

Come and enjoy refreshments with your member friends and participate in our annual business meeting.

All beverages and a selection of snacks will be provided by the Society.

As a **special treat**, Denita Benyshek will share a small exhibit of her paintings with us.

Denita received her BFA with honors in drawing and painting. She teaches in remote native villages in the Alaskan bush and on the summer faculty of the University of Fairbanks. Over sixty exhibits have included her works, including the controversial "REDEFINING VISIONARY ART" in New York this past March.

Statement of Our Purpose

In a century of discovery, of scientific expansion, of political conflict and catastrophic destruction, one man's voice sounds clearer and clearer.

C. G. Jung entered the inner reaches of the human mind, to touch the human heart. He learned that by honestly facing personal conflicts on the most everyday level, we can confront the deep set spiritual problems of universal human concern.

At a time when others sought precise answers and certainty, he probed into the unknowable mysteries of love and healing.

When so many devoted their genius to creating the means to destroy the world, he went inward on a lonely and dangerous journey, discovering those creative synthesizing forces within the human psyche that might enable the world to survive.

Jung's life, his mission, his voice, and his personal experience are a challenge and a source of illuminating hope in this dark and perilous time.

This newsletter is published three times a year by the C. G. Jung Society, Seattle, a non-profit educational corporation since 1972. The purpose of the Society is to promote the interest in and an understanding of analytical psychology and the current use of Jungian concepts by contemporary thinkers through lectures, seminars, study groups, and the maintenance of a library. By exploring these viewpoints we hope to better understand ourselves and gain new insights into our relationships, our culture and our world.

Programs are, for the most part, intended for the general public.

The mailing address for the Society is:

P.O. Box 19243
Seattle, WA 98109

For information call the Society Answering Service at:
(206) 525-3487.

The Gnostic Journey of the Soul

Presented by
Stephan A. Hoeller,
Ph.D.

Cornish North

Members \$8, Non-member \$10

Thursday, May 25 7:30 pm

An interpretation in terms of Jungian psychology of the Gnostic poetic myth, called "*The Hymn of the Pearl*", contained in the apocryphal scripture *The Acts of Thomas*. This interpretation is part of Dr. Hoeller's book, to be released by Quest Books in the Fall of this year: *Jung and the Lost Gospels*.

Dr. Stephan A. Hoeller is the author of *The Gnostic Jung and the Seven Sermons to the Dead*, a work that has attracted favorable comment. He has lectured to Jungian and related groups in various parts of the U.S. as well as in Australia, New Zealand and Europe. Dr. Hoeller's principal interest is the relationship of Jung's teachings to Gnosticism. He has lectured at the Jung Society in Seattle several times in the past and we are pleased to have him return.

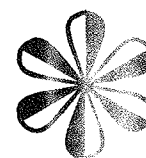
Twelfth Night Thanks

Appreciation goes to members present at the Twelfth Night Party in January for their generous contributions of delectable party foods. Thanks to you all for your expressions of culinary individuality (a delight to both the palate and the eye) and for the pleasure of your company. Special thanks go to our hosts, Dr. and Mrs. Alvord for their graciousness and hospitality.

If you have any material you would like considered for publication in this newsletter please submit it to the editor:

C.G. Jung Society
P.O. Box 19243
Seattle, WA 98109

We need poems, short essays, reviews, small drawings, etc. All submissions will be considered but we are unable to return or comment on them. Thank you.



Dostoevsky's Characters as Archetypes

**A Seminar
Presented by
Jacqueline Hartwich**

Cornish North
Members \$3, Non-members \$5
Monday, June 12 7:30 pm

In *The Brothers Karamosov* and *The Idiot*, Dostoevsky projects the struggle of the 20th century consciousness toward autonomy amid grief and guilt. The authoritarian Father-God is dying and the ego stares inward at its shadow in fear and fascination. These novels prophesy the precarious relation between individuals and society at present, in which we swing between the dictatorship of extremes in the absence of a shared communal and cosmic myth.

Jacqueline teaches courses in literature, writing and mythology at Bellevue Community College. She is a published poet and has won prizes including a first prize from The Pacific Northwest Writers Conference in 1981.

Story Symbol and the Tie that Binds

**Presented by
Book Artist
Mare Blocker**

Cornish North
Members \$3, Non-members \$5
Monday, July 10 7:30 pm

Mare Blocker's primary concern has consistently been with the mysterious and the unknown. She chooses from metaphors, symbols, patterns, and shapes which correspond to paradigms for questioning by various cultures, religions, myths, history, and stories in the creation of one-of-a-kind books. She continues a tradition that is universal and ancient.

Mare has a BFA from the University of Washington in sculpture and has lectured and shown her work in the Seattle area for the past nine years.

Grandmother's Clock

My grandmother's glass domed brass clock

Has no rocking pendulum.

Its four brass balls turn smooth,
and turn, and turn,
and twist and tight,
they stop.

*

They start
again, unwind, release,
and glide, and glide.

They spin suspended - silently

No clockwork sounds to mark the time;
Only grandmother who winds it once a year

By Bill Levy

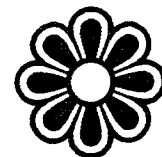
Jung's Birthday Summer Picnic

**Sunday, July 30
12:30 pm to 4:30 pm**

Come celebrate Jung's birthday at a summer picnic at beautiful Mc Donald Park near Carnation, Washington. Bring food for sharing with your friends; we will provide beverages.

Mc Donald Park is located at the south entrance to the city of Carnation in northeast King County. The park has a covered, yet open air picnic barn with several barbecues, as well as a large fire pit. Other park facilities include trails for hiking, secluded overlooks, a wide grassy meadow, suspension bridge, and the Tolt River for those who would like to fish. Within a short walk of the picnic area is a tributary to the Tolt River which provides fairly shallow and safe water play areas for children (swimming, inner-tubing, etc.).

This event promises to be a lot of fun with something for everyone. See you there! Members will receive more information about this annual event in the mail.



April 1989

Sunday	Monday	Tuesday	Wednesday	Thursday	Friday	Saturday
						1
2	3	4	5	6	7	Bill Levy Borderline Psyche 8
9	Neil Young Scandinavian Myth 10	11	12	13	14	15
16	17	18	19	20	21	22
23	24	James Hillman Lecture 25	James Hillman Seminar 26	27	28	29
30						

May 1989

Sunday	Monday	Tuesday	Wednesday	Thursday	Friday	Saturday
						Annual Membership Meeting 6
	1	2	3	4	5	
7	Ann Pitkin Poetry Reading 8	9	10	11	12	13
14	Denita Benyshek Art Evolving 15	16	17	18	19	20
21	22	23	24	Stephan Hoeller Gnostic Journey 25	26	27
28	29	30	31			

June 1989

Sunday	Monday	Tuesday	Wednesday	Thursday	Friday	Saturday
				1	2	3
4	5	6	7	8	9	10
11	Jacqueline Hartwich, Dostoevsky 12	13	14	15	16	17
18	19	20	21	22	23	24
25	26	27	28	29	30	

July 1989

Sunday	Monday	Tuesday	Wednesday	Thursday	Friday	Saturday
						1
2	3	4	5	6	7	8
9	Mare Blocker Story Symbol 10	11	12	13	14	15
16	17	18	19	20	21	22
23	24	25	26	27	28	29
Summer Picnic 30	31					

THE SHAPE OF THINGS TO COME

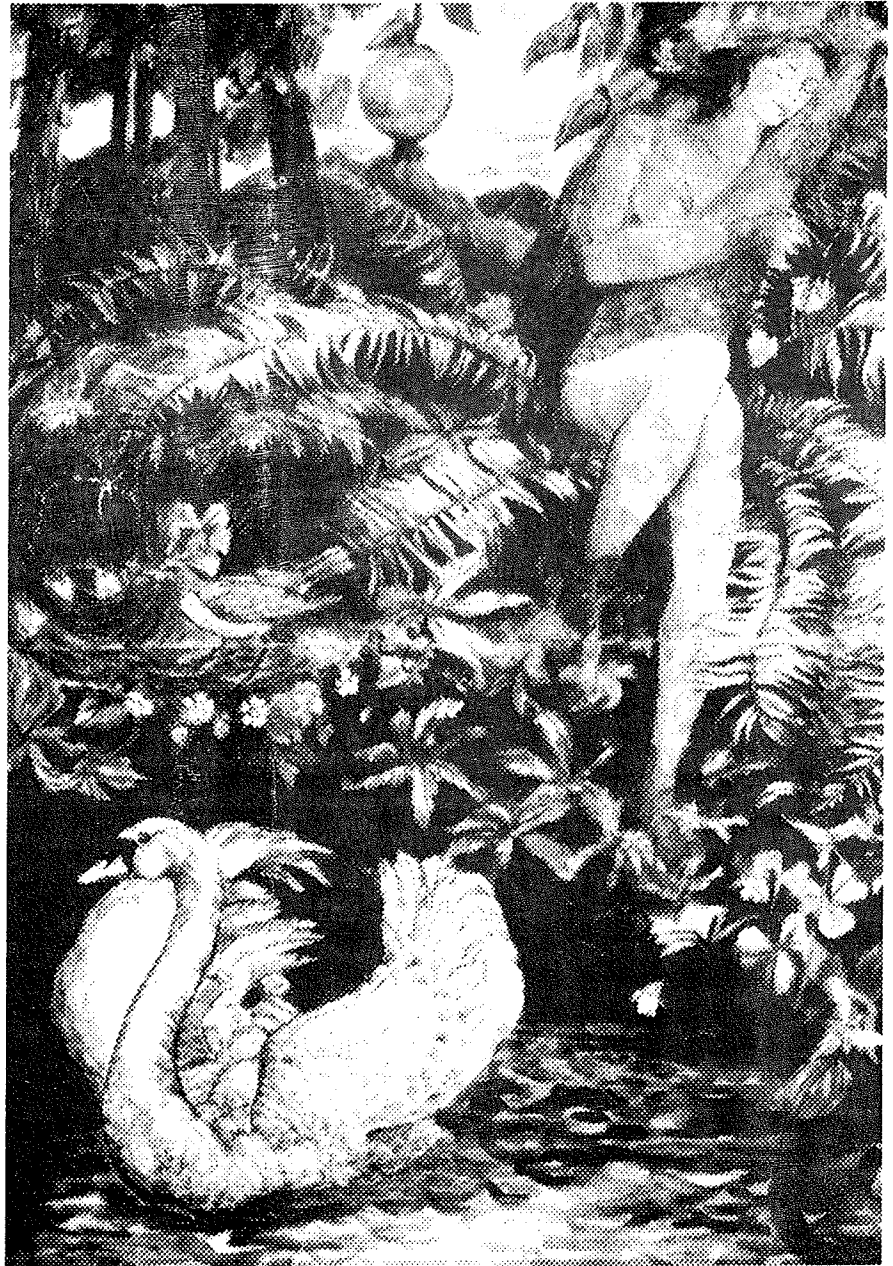
In September Janet Dallett will be doing both a lecture and a workshop. November will bring Nathan Schwartz-Salant back for a lecture and a seminar. Betty Smith, who gave us such a fine seminar on the feminine journey based on the myth of Io has tentatively agreed to return in February. In April we will show the film *A Matter of Heart* and follow this with a workshop lead by co-producer and analyst, Suzanne Wagner. In addition to these major events we will continue our tradition of several series of interesting Jungian topics.

Scandinavian Soul Images

Neil Young, Ph.D.

Monday, April 10, 1989
7:30pm Cornish North \$3

This will be a presentation of basic motifs of Scandinavian mythology and their expression in the modern plays of Ibsen. Among plays to be explored will be *Peer Gynt*, *The Wild Duck*, *The Doll's House*, *The Lady from the Sea*, *Hedda Gabler*, *The Master Builder* and *When the Dead Awaken*. These myths will include images of soul companions, anima and animus, as well as images of sacrifice, death and resurrection.



Swan
An original work by
Denita Benyshek

**C. G. Jung Society, Seattle
Registration Sheet--Spring 1989**

Make checks payable to: C. G. Jung Society, Seattle
P.O. Box 19243
Seattle, WA 98109

Feel free to Xerox this form if you'd prefer not to cut it out.

I enclose \$ _____ for enrollment in the following (please circle)

Hillman Seminar 4/26 \$50*

- Sustaining member \$75
- Contributing member \$50
- Individual member \$25
- Couple (same address) \$40
- Student/Senior \$15
- Mailing List ONLY \$ 5

*This is the pre-registration fee for both members and non-members.

Charge my Visa MC \$ _____ Number _____ Exp. date _____

Name & Address _____ Comments _____

JAMES HILLMAN

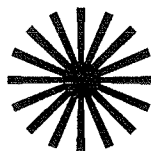
The Right to Remain Silent:

The Art of Therapy as Political Action

**Lecture on Tues 4/25
7:30pm at Kane Hall**

\$15 non-members
\$10 members

There is a relationship between art therapy and the art of therapy on the one hand and social conscience and political action on the other. The evening will address broader implications of analysis beyond the narcissistic confines of searching for self-hood among private memories, traumas, feelings, and symbols.



James Hillman is a Jungian analyst practicing in Connecticut. He is well known internationally as a speaker and writer. His works include: *The Dream and the Underworld, Anima, Pan and the Nightmare, The Myth of Analysis*, etc. He presents archetypal psychology as it impacts on the cultural imagination and on the therapy of soul.

Depth Aesthetics

Seminar on Wed. 4/26

7:30pm at the University

Unitarian Church

6556 35th Ave. N.E.

\$60 non-members

\$50 members/pre-registration

This seminar will explore Hillman's recent concerns with soul-in-the-world (*anima mundi*) which was once imagined as Venus-Aphrodite. This raises the question of relevance of beauty and ugliness for psychotherapy. Yet, depth psychology has altogether neglected beauty in its theory and practice. Can we find ways to recognize its importance and re-introduce aesthetic sensibility to care of soul?

ADDRESS CORRECTION REQUESTED

Seattle, WA 98109
P.O. Box 19243
C. G. Jung Society, Seattle

NON-PROFIT ORG.
U.S. POSTAGE
PAID
PERMIT NO. 1820
SEATTLE, WA

Cornish College of the Arts: Cornish North Location

The Cornish North location of Cornish College of the Arts is at 1501 Tenth Avenue East, just north of St. Mark's Cathedral. To park behind Cornish North take the driveway between St. Mark's and Cornish (a red brick building), then turn right at the end of the building through the brick arch. The back door opening onto the parking lot will be open. There is a bus shelter in front of St. Mark's and easy access from downtown and the University District by way of Broadway/Tenth Avenue.

Society Library: Cornish North Location

The location for the Society Library is in the process of change and will be at Cornish North. This collection will be available in the classroom at Cornish North to be used coincident with scheduled events. Other hours for the Society Library are yet to be established. If you wish to volunteer, return overdue materials, make donations, or have any questions, call the Society Librarian, Bette Joram at 937-6830.